



Up-to-date Questions and Answers from authentic resources to improve knowledge and pass the exam at very first attempt. ---- Guaranteed.



4A0-100 Dumps
4A0-100 Braindumps
4A0-100 Real Questions
4A0-100 Practice Test
4A0-100 Actual Questions



killexams.com

Alcatel-Lucent

4A0-100

Alcatel-Lucent Scalable IP Networks - 2025

ORDER FULL VERSION

<https://killexams.com/pass4sure/exam-detail/4A0-100>



Question #311

Which of the following is NOT a characteristic of the Internet protocol layer?

- A. It provides a unique addressing scheme to identify hosts.
- B. It provides a user interface to the network.
- C. It uses routing protocols for path determination.
- D. It provides end-to-end forwarding of datagrams.

Answer: B

Question #312

Which of the following is NOT a characteristic of the Internet?

- A. The Internet is a global and distributed network.
- B. The Internet is a network owned by Tier 1 service providers.
- C. The Internet is an open network of networks.
- D. The Internet is a network that is advertised across the globe.

Answer: B

Question #313

Which of the following is NOT a function of the control plane?

- A. Building routing tables using dynamic routing protocols.
- B. Building forwarding tables for the IOMs.
- C. Handling router configuration and management functions.
- D. Processing and forwarding user application traffic.

Answer: D

Question #314

Which of the following is NOT a valid log source in a Nokia 7750 SR?

- A. Main
- B. Security
- C. Syslog
- D. Debug

Answer: C

Question #315

What happens when a switch receives an Ethernet frame with unknown source and destination MAC addresses?

- A. The frame is silently discarded.
- B. The source MAC address is saved in the MAC FDB, and the frame is discarded.
- C. The source MAC address is saved in the MAC FDB, and the frame is flooded to all ports except the receiving port.
- D. The source and destination MAC addresses are saved in the MAC FDB, and the frame is flooded to all ports.

Answer: C

Question #316

A switch with the MAC FDB shown receives an Ethernet frame with source MAC address 00:00:8c:01:00:0a and destination MAC address 00:00:8c:01:00:0c. On which port is the frame forwarded?

MAC FDB

1/1/1	00:00:8c:01:00:0a
1/1/2	00:00:8c:01:00:0b
1/1/3	00:00:8c:01:00:0c
1/1/4	00:00:8c:01:00:0d

- A. 1/1/1
- B. 1/1/2
- C. 1/1/3
- D. 1/1/4

Answer: C

Question #317

If a 5-port LAG is configured with the option of "Eœport-threshold 2 action down", and dynamic-cost is enabled, what will happen if the total number of operational links in the LAG is 2?

- A. The LAG cost is equal to the link cost divided by 3.
- B. The LAG cost is equal to the link cost.
- C. The LAG is operationally down.
- D. The LAG cost is equal to the link cost divided by 5.

Answer: C

Question #318

What type of MAC address is ff:ff:ff:ff:ff:ff?

- A. Unicast
- B. Multicast
- C. Broadcast
- D. Anycast

Answer: C

Question #319

Which of the following statements about IP filters on a Nokia 7750 SR is TRUE?

- A. Multiple ingress IP filters can be used on a single interface.
- B. An IP filter can be applied to the management port.
- C. The same IP filter can be used on multiple interfaces.
- D. Only one IP filter can be defined per router.

Answer: C

Question #320

Which of the following about the displayed IP filter is TRUE?

```

*A:SRC_R1# show filter ip 1
=====
IP Filter
=====
Filter Id      : 1                      Applied       : Yes
Scope         : Template                Def. Action   : Forward
Radius Ins Pt : n/a
Crctl. Ins Pt : n/a
Entries       : 1
Description   : new-filter
=====
Filter Match Criteria : IP
=====
Entry         : 1
Description   : (Not Specified)
Log Id       : n/a
Src. IP      : 1.2.3.0/24
Src. Port    : None
Dest. IP     : 2.3.4.0/24
Dest. Port   : None
Protocol     : 6                        Dscp         : Undefined
ICMP Type    : Undefined                ICMP Code    : Undefined
Fragment     : off                      Src Route Opt : off
Sampling     : off                      Int. Sampling : On
IP-Option    : 0/0                      Multiple Option : off
TCP-syn      : off                      TCP-ack      : off
Option-pres  : off
Match action : Drop
Ing. Matches : 0 pkts
Egr. Matches : 0 pkts
=====

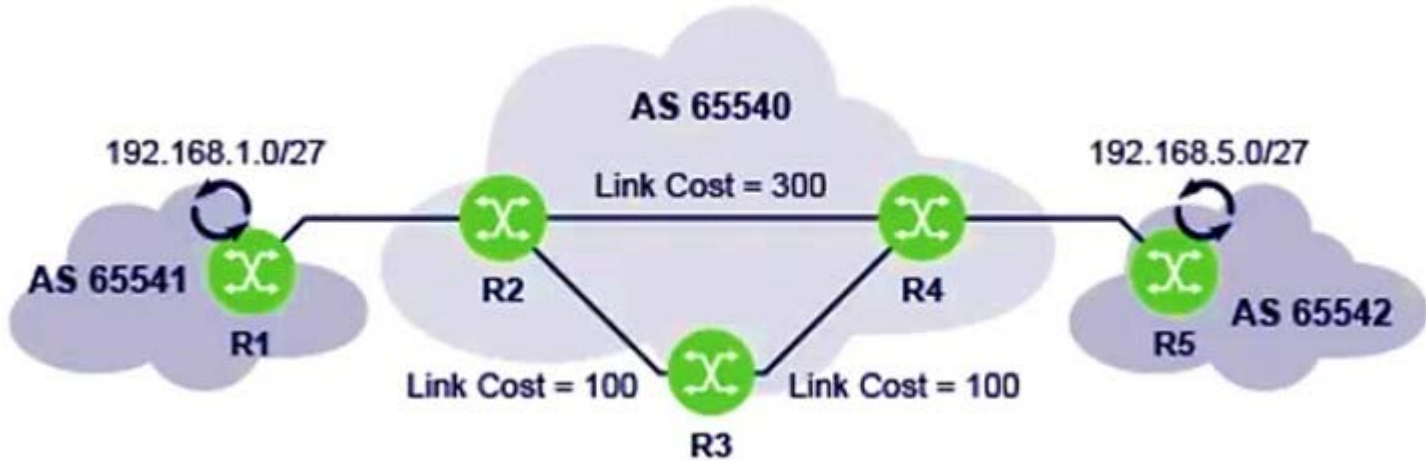
```

- A. TCP (protocol 6) traffic between addresses 1.2.3.0/24 and 2.3.4.0/24 is dropped.
- B. TCP (protocol 6) traffic from source address 1.2.3.0/24 to destination address 2.3.4.0/24 is forwarded.
- C. TCP (protocol 6) traffic from source address 2.3.4.0/24 to destination address 1.2.3.0/24 is dropped.
- D. TCP (protocol 6) traffic from source address 1.2.3.0/24 to destination address 2.3.4.0/24 is dropped.

Answer: A

Question #321

Which of the following routing protocols provides routing between routers R1 and R2?



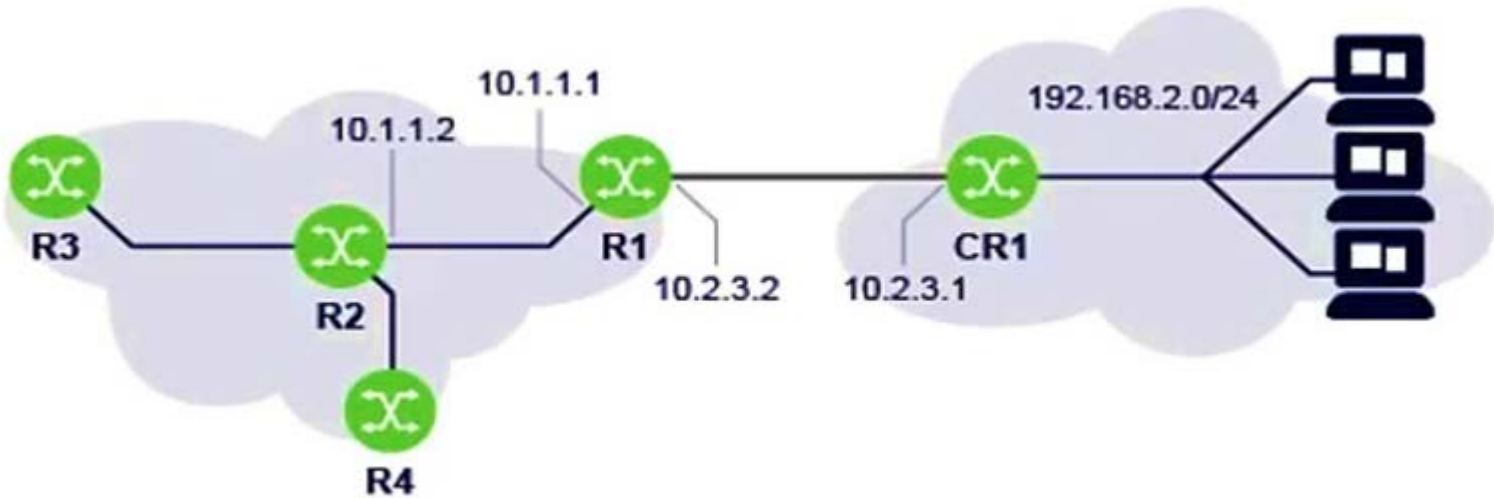
- A. BGP
- B. RIPv2
- C. OSPF

- D. IS-IS

Answer: A

Question #322

What next-hop address should router R2 use to reach a host on 192.168.2.0/24?



- A. 10.2.3.2
- B. 10.1.1.1
- C. 10.2.3.1
- D. 10.1.1.2

Answer: B

Question #323

Which of the following is a characteristic of Link State protocols?

- A. Routers send a copy of their entire routing table to their neighbors.
- B. Routers send frequent periodic updates to the entire network.
- C. Routers know the entire network topology.
- D. Routers use hop-count to calculate their routing tables.

Answer: C

Question #324

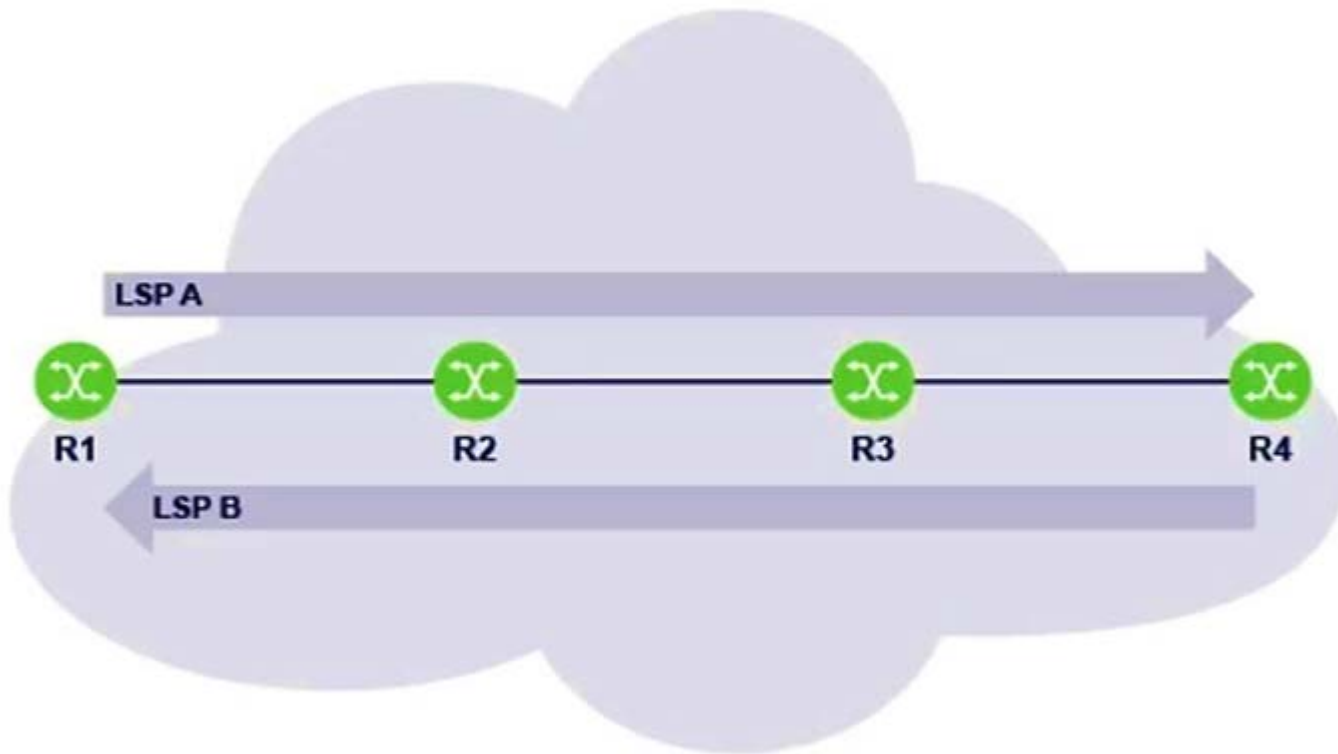
When forwarding a packet, which field in the following table determines the egress interface?

- A. Preference
- B. Metric
- C. Next-hop
- D. Cost

Answer: C

Question #325

Which of the following statements about router R3 is TRUE?



- A. Router R3 is the iLER for LSP B.
- B. Router R3 is the eLER for LSP A.
- C. Router R is an LSR for both LSP A and LSP B.
- D. Router R3 is LSR for LSP A and an LER for LSP B.

Answer: C

Question #326

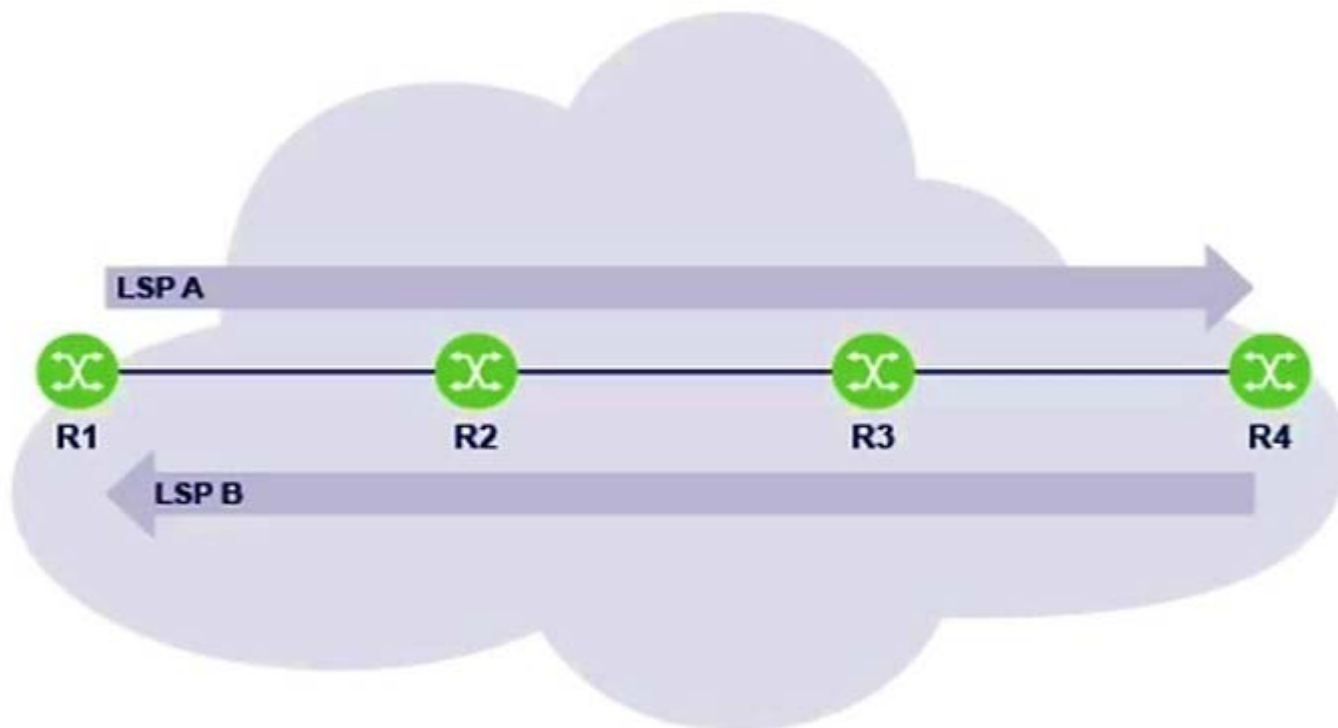
Which device is responsible for removing the MPLS label before the packet reaches the customer?

- A. The ingress LER
- B. The CE device
- C. The P router
- D. The egress LER

Answer: D

Question #327

Which of the MPLS routers is responsible for pushing new labels for LSP A and LSP B?



- A. Router R1 pushes labels for both LSP A and LSP B.
- B. Router R4 pushes labels for both LSP A and LSP B.
- C. Router R1 pushes labels for LSP A, while router R4 pushes labels for LSP B.
- D. Router R4 pushes labels for LSP A, while router R1 pushes labels for LSP B.

Answer: C

Question #328

From the CE perspective, how does a VPWS operate?

- A. Two sites are directly connected by a single cable.
- B. Two sites are connected through a single switched LAN.
- C. Two sites are connected through a public routed network.
- D. Two sites are connected through a private routed network.

Answer: A



KILLEXAMS.COM

Killexams.com is an online platform that offers a wide range of services related to certification exam preparation. The platform provides actual questions, exam dumps, and practice tests to help individuals prepare for various certification exams with confidence. Here are some key features and services offered by Killexams.com:



Actual Exam Questions: *Killexams.com provides actual exam questions that are experienced in test centers. These questions are updated regularly to ensure they are up-to-date and relevant to the latest exam syllabus. By studying these actual questions, candidates can familiarize themselves with the content and format of the real exam.*

Exam Dumps: *Killexams.com offers exam dumps in PDF format. These dumps contain a comprehensive collection of questions and answers that cover the exam topics. By using these dumps, candidates can enhance their knowledge and improve their chances of success in the certification exam.*

Practice Tests: *Killexams.com provides practice tests through their desktop VCE exam simulator and online test engine. These practice tests simulate the real exam environment and help candidates assess their readiness for the actual exam. The practice tests cover a wide range of questions and enable candidates to identify their strengths and weaknesses.*

Guaranteed Success: *Killexams.com offers a success guarantee with their exam dumps. They claim that by using their materials, candidates will pass their exams on the first attempt or they will refund the purchase price. This guarantee provides assurance and confidence to individuals preparing for certification exams.*

Updated Content: *Killexams.com regularly updates its question bank and exam dumps to ensure that they are current and reflect the latest changes in the exam syllabus. This helps candidates stay up-to-date with the exam content and increases their chances of success.*

Technical Support: *Killexams.com provides free 24x7 technical support to assist candidates with any queries or issues they may encounter while using their services. Their certified experts are available to provide guidance and help candidates throughout their exam preparation journey.*