



Up-to-date Questions and Answers from authentic resources to improve knowledge and pass the exam at very first attempt. ----- Guaranteed.



500-220 Dumps
500-220 Braindumps
500-220 Real Questions
500-220 Practice Test
500-220 Actual Questions



killexams.com

Cisco

500-220

Cisco Meraki Solutions Specialist (ECMS)

ORDER FULL VERSION

<https://killexams.com/pass4sure/exam-detail/500-220>



Question: 140

Which design requirement is met by implementing syslog versus SNMP?

- A. when automation capabilities are needed
- B. when proactive alerts for critical events must be generated
- C. when organization-wide information must be collected
- D. when information such as flows and client connectivity must be gathered

Answer: A,C,D

Explanation:

Reference:

https://documentation.meraki.com/General_Administration/Monitoring_and_Reporting/Meraki_Device_Reporting_-_Syslog%2C_SNMP%2C_and_API

Question: 141

When an SSID is configured with Sign-On Splash page enabled, which two settings must be configured for unauthenticated clients to have full network access and not be allow listed? (Choose two.)

- A. Controller disconnection behavior
- B. Captive Portal strength
- C. Simultaneous logins
- D. Firewall & traffic shaping
- E. RADIUS for splash page settings

Answer: A

Explanation:

Reference: https://documentation.meraki.com/MR/Access_Control

Question: 142

For which two reasons can an organization become "Out of License"? (Choose two.)

- A. licenses that are in the wrong network
- B. more hardware devices than device licenses
- C. expired device license
- D. licenses that do not match the serial numbers in the organization
- E. MR licenses that do not match the MR models in the organization

Answer: A,B

Explanation:

Reference: https://documentation.meraki.com/General_Administration/Licensing/Meraki_Licensing_FA_Qs

Question: 143

Refer to the exhibit.



For an AP that displays this alert, which network access control method must be in use?

- A. preshared key
- B. WPA2-enterprise with my RADIUS server
- C. splash page with my RADIUS server
- D. MAC-based access control with RADIUS server

Answer: A

Question: 144

Which type of authentication protocol is used when using OSPF on an MX appliance?

- A. MD5
- B. certificate
- C. plaintext
- D. SHA-1

Answer: A

Explanation:

Reference: https://documentation.meraki.com/MX/Site-to-site_VPN/Using_OSPF_to_Advertise_Remote_VPN_Subnets

Question: 145

Which information is used to calculate whether a WAN link has high usage?

- A. data under Security & SD WAN > Appliance Status > Uplink > Live Data
- B. total historical throughput of an uplink
- C. total number of devices that are actively passing traffic
- D. value under Security & SD WAN > SD WAN & Traffic Shaping > Uplink Configuration

Answer: D

Question: 146

A new application needs to be pushed to all iOS devices. Some devices report "NotNow" in the event log and do not install the application.

What does the "NotNow" event indicate?

- A. The application requires the most recent iOS version.
- B. The device is locked with a passcode.
- C. The device cannot connect to Apple servers.
- D. The device cannot connect to Cisco Meraki servers.

Answer: A,B,C,D

Explanation:

Reference: <https://community.meraki.com/t5/Mobile-Device-Management/Check-NotNow-Status/td-p/3887>

Question: 147

In an organization that uses the Co-Termination licensing model, which two operations enable licenses to be applied? (Choose two.)

- A. Renew the Dashboard license.
- B. License a network.
- C. License more devices.
- D. Call Meraki support.
- E. Wait for the devices to auto-renew.

Answer: A

Explanation:

Reference: https://documentation.meraki.com/General_Administration/Licensing/Meraki_Co-Termination_Licensing_Overview

Question: 148

Which requirement is needed to implement Fast Lane on Cisco Meraki APs?

- A. wireless profile installed on an Apple iOS device
- B. wireless profile installed on a Cisco iOS access point
- C. adaptive 802.11r disabled
- D. traffic shaping rule tagging traffic with a DSCP value of 46 to Apple.com

Answer: A,B

Explanation:

Reference: https://documentation.meraki.com/MR/WiFi_Basics_and_Best_Practices/Wireless_QoS_and_Fast_Lane

Question: 149

What are two ways peers interact with ports that Auto VPN uses? (Choose two.)

- A. For IPsec tunneling, peers use high UDP ports within the 32768 to 61000 range.
- B. Peers contact the VPN registry at UDP port 9350.
- C. For IPsec tunneling, peers use high TCP ports within the 32768 to 61000 range.
- D. Peers contact the VPN registry at TCP port 9350.
- E. For IPsec tunneling, peers use UDP ports 500 and 4500.

Answer: A,B

Explanation:

Reference: https://documentation.meraki.com/MX/Site-to-site_VPN/Meraki_Auto_VPN_-_Configuration_and_Troubleshooting

Question: 150

Air Marshal has contained a malicious SSID.

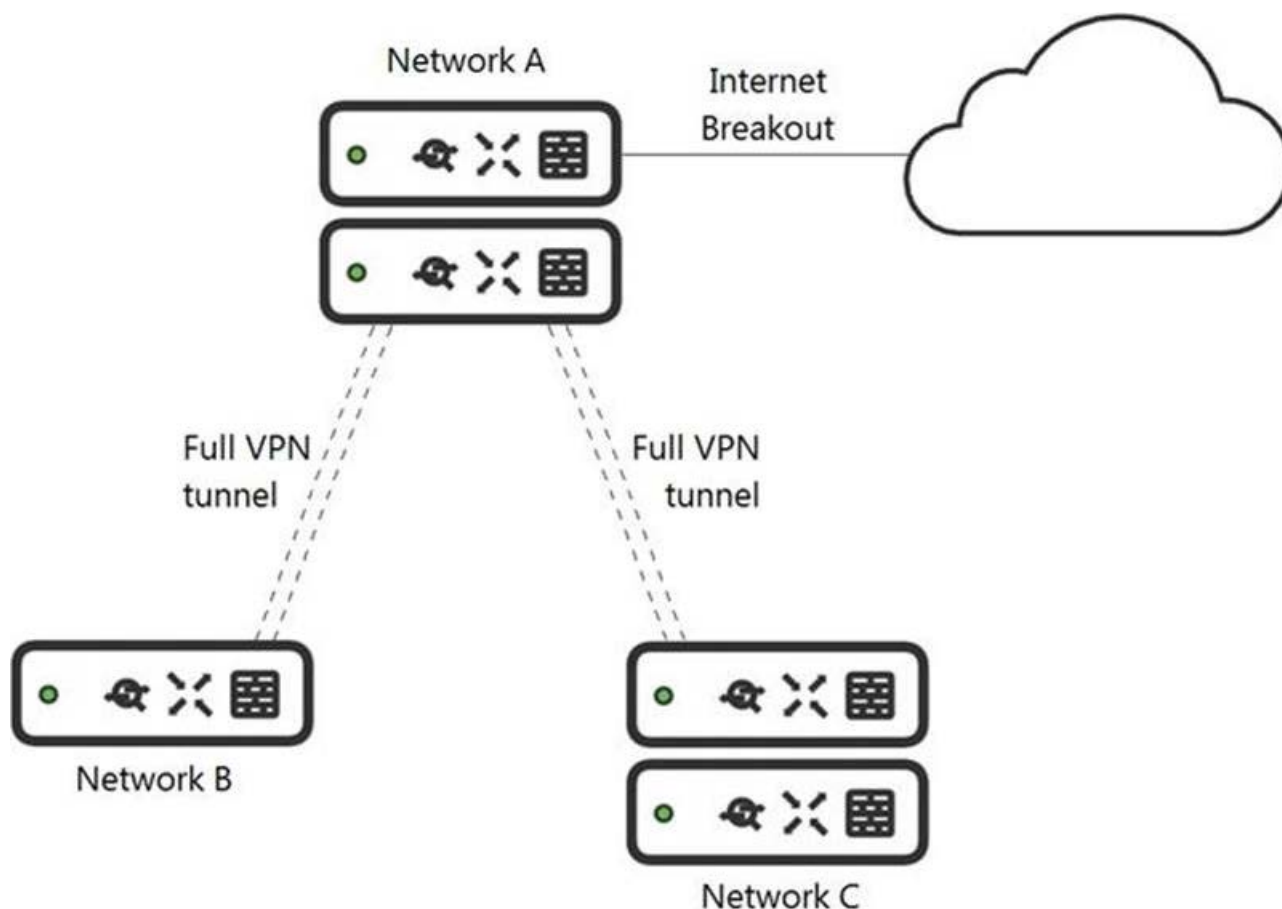
What are two effects on connectivity? (Choose two.)

- A. Currently associated clients stay connected.
- B. New clients can connect.
- C. Currently associated clients are affected by restrictive traffic shaping rules.
- D. New clients cannot connect.
- E. Currently associated clients are disconnected.

Answer: D,E

Question: 151

Refer to the exhibit.



What is the minimal Cisco Meraki Insight licensing requirement?

- A. A single Meraki Insight license must be configured on network A to gain Web App Health visibility on network B.
- B. A single Meraki Insight license must be configured on network B to gain Web App Health visibility on network A.
- C. A single Meraki Insight license must be configured on network A, and a single license must be configured on network B, to gain Web App Health visibility on network A.
- D. Two Meraki Insight licenses must be configured on network A to gain Web App Health visibility on network B.
- E. Two Meraki Insight licenses must be configured on network A and a single license must be configured on network B, to gain Web App Health visibility on network B.

Answer: C

Question: 152

A customer wants to use Microsoft Azure to host corporate application servers.

Which feature does the customer get by using a vMX appliance rather than connecting directly to Azure by VPN?

- A. malware protection
- B. SD-WAN
- C. next-generation firewall
- D. intrusion prevention

Answer: C

Question: 153

DRAG DROP

Drag and drop the steps from the left into the sequence on the right to manage device control, according to Cisco Meraki best practice.

enroll	1
create profile	2
add settings profile	3
define tags	4
apply profile	5

- wrong

Answer: C

Explanation:

Table

Description automatically generated with medium confidence

Question: 154

Refer to the exhibit.

Security Center the last 2 weeks

Search events Filter 158 matching events

Summary Events

Time	Type	Source	Destination	Disposition	Action	Details
May 30 21:22:50	IDS Alert	Desktop 10	a104-96-113-137 deploy.static.akamaitech nologies.com	Blocked	MALWARE-CNC	Win.Trojan.Cridex variant outbound connection
May 30 21:22:46	IDS Alert	Desktop 10	a104-96-113-137 deploy.static.akamaitech nologies.com	Blocked	MALWARE-CNC	Win.Trojan.Cridex variant outbound connection
May 30 21:22:46	IDS Alert	Desktop 10	a104-96-113-137 deploy.static.akamaitech nologies.com	Blocked	MALWARE-CNC	Win.Trojan.Cridex variant outbound connection
May 30 21:22:46	IDS Alert	Desktop 10	a104-96-113-137 deploy.static.akamaitech nologies.com	Blocked	MALWARE-CNC	Win.Trojan.Cridex variant outbound connection

MALWARE-CNC Win.Trojan.Cridex variant outbound connection

Rule ID 1-31772

Whitelist On Off

Links www.virustotal.com

Actions Rule details

Inspect picklist

Show this signature only

Which IDS/IPS mode is the MX Security Appliance configured for?

- A. quarantine
- B. prevention
- C. detection

D. blocking

Answer: B

SAMPLE QUESTIONS



*These questions are for demo purpose only. **Full version** is up to date and contains actual questions and answers.*

Killexams.com is an online platform that offers a wide range of services related to certification exam preparation. The platform provides actual questions, exam dumps, and practice tests to help individuals prepare for various certification exams with confidence. Here are some key features and services offered by Killexams.com:



Actual Exam Questions: *Killexams.com provides actual exam questions that are experienced in test centers. These questions are updated regularly to ensure they are up-to-date and relevant to the latest exam syllabus. By studying these actual questions, candidates can familiarize themselves with the content and format of the real exam.*

Exam Dumps: *Killexams.com offers exam dumps in PDF format. These dumps contain a comprehensive collection of questions and answers that cover the exam topics. By using these dumps, candidates can enhance their knowledge and improve their chances of success in the certification exam.*

Practice Tests: *Killexams.com provides practice tests through their desktop VCE exam simulator and online test engine. These practice tests simulate the real exam environment and help candidates assess their readiness for the actual exam. The practice tests cover a wide range of questions and enable candidates to identify their strengths and weaknesses.*

Guaranteed Success: *Killexams.com offers a success guarantee with their exam dumps. They claim that by using their materials, candidates will pass their exams on the first attempt or they will refund the purchase price. This guarantee provides assurance and confidence to individuals preparing for certification exams.*

Updated Content: *Killexams.com regularly updates its question bank and exam dumps to ensure that they are current and reflect the latest changes in the exam syllabus. This helps candidates stay up-to-date with the exam content and increases their chances of success.*

Technical Support: *Killexams.com provides free 24x7 technical support to assist candidates with any queries or issues they may encounter while using their services. Their certified experts are available to provide guidance and help candidates throughout their exam preparation journey.*

For More exams visit <https://killexams.com/vendors-exam-list>
Kill your exam at First Attempt....Guaranteed!