



Up-to-date Practice Test with Latest Questions and Answers covering latest syllabus and topics of the exam. Makes you ready to face actual exam.



ACE001 Practice Questions
ACE001 Practice Test
ACE001 Practice Exam
ACE001 Exam Questions
ACE001 Study Guide



killexams.com

Alfresco

ACE001

Alfresco Certified Engineer (ACSCE)

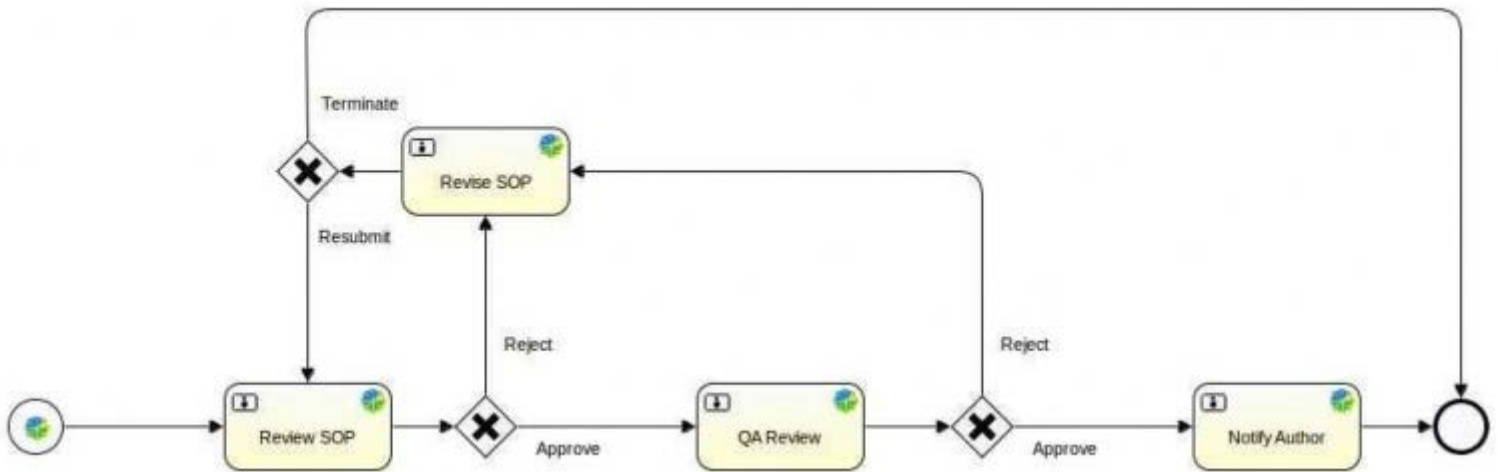
ORDER FULL VERSION

<https://killexams.com/pass4sure/exam-detail/ACE001>



Question: 119

The "QA Review" task is of type `activitiReviewTask`, this sets a task variable called `wf_reviewOutcome` with a value, either "Approve" or "Reject". What needs to be done to use this value to successfully chose the right sequence flow?



- A. The task variable needs to be copied to the execution level using a "complete" task listener on the "QA Review" task.
- B. The task variable needs to be copied to the execution level using a "take" listener on the sequence flow to the gateway.
- C. The task variable is automatically copied to the execution level on task completion by Activiti.
- D. The task variable needs to be added to the workflow package and saved to the repository.
- E. The task variable needs to be copied to the execution level using a "create" task listener on the "Notify Author" task.

Answer: A

Question: 120

Identify which of the following is NOT a default subsystem provided by Alfresco.

- A. Synchronization
- B. Quartz scheduler
- C. IMAP
- D. Authentication

Answer: B

Question: 121

Which of the following is NOT an out-of-the-box root scoped object in the Java Script API?

- A. space

- B. log**
- C. document**
- D. companyhome**

Answer: B

Web Scripting

In this section there are items requiring a response.

Question: 122

Identify the proper use of a metadata extractor.

- A. To extract content metadata to a file for importing.**
- B. To retrieve metadata from a document to be used in workflow.**
- C. To use data within a document as property values.**
- D. To use externally accessible data as metadata.**

Answer: C

Question: 123

Which FreeMarker expression would be used to access the presentation template that is being applied to the node?

- A. template**
- B. node.template**
- C. node.document**
- D. document**
- E. document.template**

Answer: A

Question: 124

In Share the DocumentLibrary defines a number of "action groups" which determine the actions shown to the user. The action group used is determined by:

- A. The default action group on the folder.**
- B. The aspects applied to the node.**
- C. The mime type of the node.**
- D. The status of the document.**
- E. The current user.**
- F. The view currently in use.**
- G. The type of node.**

Answer: FG

Question: 125

Share commonly uses asynchronous HTTP requests with callback functions to retrieve data from the repository. What is the primary advantage of using this approach in your own customizations?

- A. Data is automatically parsed into the correct format.**
- B. It reduces the number of round-trips to the server.**
- C. It does not require any client-side code.**

D. The initial page load time is reduced.

Answer: D

Question: 126

A web script has a JavaScript controller script named 'helloworld.get.js'. What is the correct name for the output template associated with the web script, which will return data in JSON format?

- A. helloworld.get.json.ftl**
- B. helloworld.get.json**
- C. helloworld.get.js.json**
- D. helloworld.get.ftl**

Answer: A

Question: 127

When configuring Share through share-config-custom.xml you can group fields using which element?

- A. <block>**
- B. <for-mode>**
- C. <form>**
- D. <set>**
- E. <group>**

Answer: D

Question: 128

Which of the following is one of the three basic permissions in the CMIS Domain Model?

- A. cmis:write**
- B. cmis:update**
- C. cmis:setcontent**
- D. cmis:delete**

Answer: A

Web Scripting

In this section there are items requiring a response.

Question: 129

Which two of the following statements are true about the differences between the Alfresco JavaScript API and the Alfresco FreeMarker API?

- A. Only JavaScript API allows the modification of nodes.**
- B. Only FreeMarker API allows the creation of nodes.**
- C. Only FreeMarker API allows the user to perform Lucene searches.**
- D. Only FreeMarker API allows access to workflows.**
- E. Only JavaScript API allows the creation of nodes.**

Answer: AE

Alfresco API

In this section there are items requiring a response.

Question: 130

Which of the following changes can NOT be made in the share-config-custom.xml file.

- A. Setting the labels for fields on the "Search" dialog.**
- B. Setting a label for a type on the "Change Type" dialog.**
- C. Changing the FreeMarker template that controls the display of a field.**
- D. Grouping fields into sets on the "Edit Metadata" page.**

Answer: B

Killexams.com is a leading online platform specializing in high-quality certification exam preparation. Offering a robust suite of tools, including Exam Questions, practice tests, and advanced test engines, Killexams.com empowers candidates to excel in their certification exams. Discover the key features that make Killexams.com the go-to choice for exam success.



Practice Exam Questions Based on Current Exam Objectives

Killexams.com provides practice exam questions aligned with the latest official exam objectives and latest syllabus. Our content is reviewed and updated regularly to reflect recent changes announced by certification vendors. By studying these practice questions, candidates will cover the structure, difficulty level, and topics of the actual exam, helping them prepare more effectively and efficiently.

Comprehensive Practice Exams (PDF Format)

Killexams.com offers multiple-choice questions (MCQs) in easy-to-read PDF format, covering all major domains of the exam. Each PDF contains a structured collection of practice questions and verified answers designed to support focused study. These MCQs help candidates reinforce key concepts, identify knowledge gaps, and improve exam readiness through consistent practice.

Realistic Practice Tests (Online Test Engine & Desktop Test Engine)

To support hands-on preparation, Killexams.com provides practice tests through both an Online Test Engine and a Desktop Test Engine. These tools are designed to simulate a real exam environment, allowing candidates to practice under exam-like conditions, with latest syllabus and topics of the exam. Performance tracking, test history, and result analysis help users evaluate their progress and focus on areas that need improvement.

Risk-Free Purchase Policy

Killexams.com follows a transparent and customer-friendly purchase policy. If users are not satisfied with the study materials, they may request assistance or a refund in accordance with our published terms and conditions. This policy reflects our commitment to customer satisfaction, fairness, and confidence in our preparation resources.

Regularly Updated Content

Our practice question bank is reviewed and updated on an ongoing basis to stay aligned with the latest exam outlines and vendor updates. This ensures candidates are studying up-to-date, relevant material, and preparing with content that reflects current exam expectations, helping them stay confident and well-prepared.