



Up-to-date Practice Test with Latest Questions and Answers covering latest syllabus and topics of the exam. Makes you ready to face actual exam.



MB-700 Practice Questions
MB-700 Practice Test
MB-700 Practice Exam
MB-700 Exam Questions
MB-700 Study Guide



killexams.com

Microsoft

MB-700

Microsoft Dynamics 365: Finance and Operations Apps Solution Architect

ORDER FULL VERSION



<https://killexams.com/pass4sure/exam-detail/MB-700>

Question: 1590

For a global rollout with varying go-live dates, which phasing strategy minimizes code divergence?

- A. Branch by module rather than geography
- B. Create long-lived release branches per region
- C. Maintain single main branch with feature toggles per region
- D. Use separate repositories per region
- E. Rely on hotfixes to align regions post-go-live

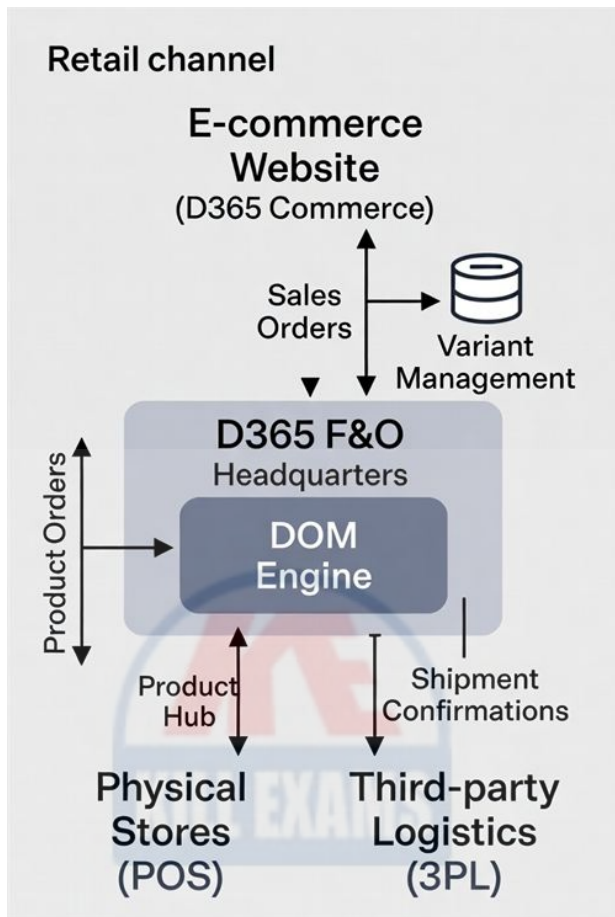
Answer: C

Explanation: Maintaining single main branch with feature toggles per region keeps codebase unified, reduces merge conflicts, and simplifies ongoing maintenance and upgrades while enabling independent activation schedules.

Question: 1591

Case study

"TrendStyle" is an apparel retailer with 200 stores. They are implementing D365 F&O and Commerce. Their primary challenge is "Omni-channel" fulfillment, where a customer buys online but returns in-store. They use "Variant" management for Size/Color/Style combinations. The architect must ensure that the "Product Master" is synchronized across all channels and that "Distributed Order Management" (DOM) is optimized to reduce shipping costs.



During "Gathering Data Migration Requirements," you find that the legacy system stores "Customer Loyalty" points in a separate SQL database. How should this be migrated?

- A. Import the points as "Credit Notes" in the Accounts Receivable module
- B. Migrate the data to the "Retail Loyalty" tables in Commerce using DMF
- C. Use "Manual Journals" to record the loyalty liability in the General Ledger
- D. Use "Power Apps" to display the legacy SQL data in the POS

Answer: B

Explanation: Migrating the data directly to the Retail Loyalty tables via the Data Management Framework ensures that the points are available for use in the native Commerce loyalty engine, maintaining a seamless customer experience.

Question: 1592

While defining the 'Data Transformation' strategy for 'Customer' addresses, the architect notices the legacy system has addresses in a single 250-character field, whereas D365 uses 'Street', 'City', 'State', and 'Zip' as separate fields. Which technical approach should the architect use to parse this data?

- A. Write a 'Custom Source to Staging' X++ method in the Data Entity to parse the string using RegEx.
- B. Use an 'Excel Power Query' to split the column based on delimiters before uploading the file to DMF.

- C. Import the full string into the 'Street' field and let the 'Address Validation Service' correct it.
- D. Use the 'Data Management' 'Auto-split' function on the 'Address' field mapping.

Answer: A

Explanation: While Excel can handle simple splits, complex parsing of a single address string into City/State/Zip (where delimiters might be inconsistent) is best handled by a custom transformation in the Data Entity. By writing X++ logic in the `mapEntityToDataSource` or a custom parsing method, the architect can apply sophisticated logic to ensure the data is correctly distributed into the target D365 fields during the staging process.

Question: 1593

A telecom operator has region-specific asset maintenance schedules causing 24% unplanned outages and excess spares. Asset count reaches 1.5 million with 480,000 PM plans. Which two optimization opportunities for asset management should the architect emphasize?

- A. Implement asset leasing for rented infrastructure tracking
- B. Shift to predictive maintenance leveraging IoT condition monitoring
- C. Standardize PM plans using asset categories and meter-based triggers
- D. Enable warranty claim processing automation
- E. Use work order templates for recurring tasks

Answer: B,C

Explanation: Standardize PM plans using asset categories and meter-based triggers ensures consistent intervals, reading roll-ups, and hierarchy inheritance, reducing redundancy and improving schedule adherence. Shift to predictive maintenance leveraging IoT condition monitoring uses sensor thresholds and failure predictions to trigger work orders proactively, minimizing outages and optimizing spares inventory.

Question: 1594

An organization is about to implement Dynamics 365 Finance and Operations in multiple phases to comply with internal policies. As the solution architect, what factors should be weighed when deciding on the logical phasing of the solution?

- A. Stakeholder readiness for new features
- B. Compliance-driven changes that must be prioritized
- C. Global standardization of business processes
- D. The technical proficiency of implementation teams
- E. The financial impact of each phase on current operations

Answer: A,B,E

Explanation: Stakeholder readiness for new features ensures smoother adoption, while assessing the financial impact keeps implementations aligned with business objectives. Compliance-driven changes must be prioritized to align with regulatory requirements.

Question: 1595

In the solution blueprint, you must define the environments strategy for a project with a mandatory third-party ISV solution that requires a two-week testing cycle per update. The client demands monthly hotfix deployments and biannual major updates. Which environment strategy ensures stability for the ISV solution while meeting update cadences?

- A. Development, Build/Test, UAT, Production. Deploy all updates to Build/Test first.
- B. Development, UAT, Production. Test ISV updates directly in UAT.
- C. Development, ISV Test, UAT, Pre-Production, Production. Route all Microsoft updates through Pre-Production, but deploy ISV updates to the dedicated ISV Test environment first for validation.
- D. Development, Sandbox, Production. Use Sandbox for all testing.

Answer: C

Explanation: A dedicated ISV Test environment isolates the validation cycle for the critical third-party component. This prevents the two-week ISV testing cycle from blocking the flow of Microsoft monthly hotfixes, which can be validated in parallel in the Pre-Production environment. This tiered approach manages risk and different release cadences effectively.

Question: 1596

An operational manager wants detailed insights into inventory levels across different locations using SSRS. What process should be followed to create an effective SSRS report?

- A. Design the report layout before data analysis
- B. Use pre-built templates without modification
- C. Create a direct database connection without optimization
- D. Ensure the report is only accessible to management
- E. Gather user requirements for the report specifics

Answer: A,E

Explanation: Gathering user requirements is crucial in tailoring the report to meet operational needs. Designing the report layout after understanding the necessary specifics allows for more targeted insights.

Question: 1597

A global firm has 1.5 million employee records across HR legacy systems. Which two migration challenges for HCM integration apply?

- A. Manual data entry post-migration
- B. Full history without cut-off
- C. Need for worker to position mapping
- D. High employee volume (1.5 million) requiring staged import
- E. No role assignment validation

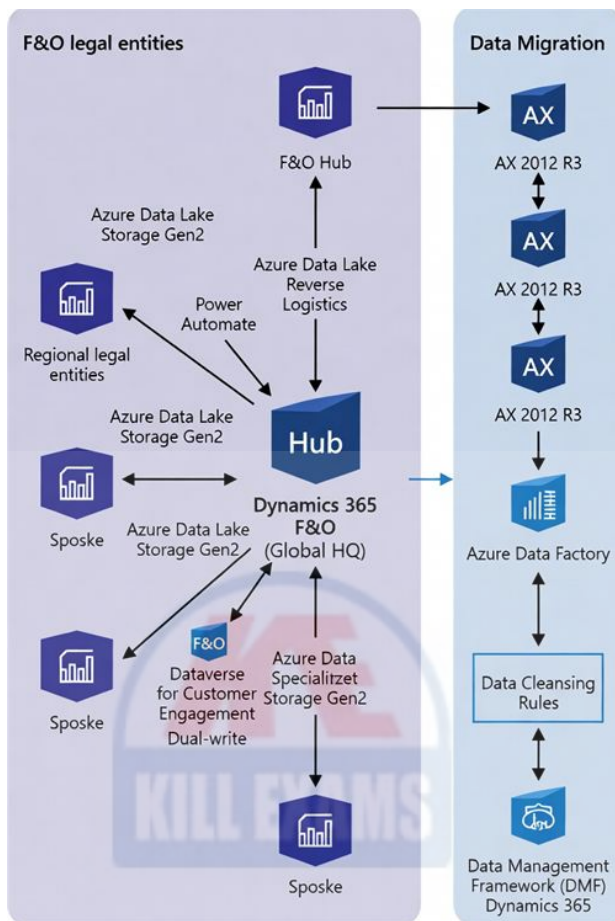
Answer: C,D

Explanation: High employee volume (1.5 million) requiring staged import uses HcmWorker entity phasing. Need for worker to position mapping ensures organizational structure integrity.

Question: 1598

Case study

Contoso Manufacturing is a global entity operating in 15 countries. They are transitioning from a traditional "make-to-stock" model to a "circular economy" model involving product-as-a-service, refurbishing, and complex reverse logistics. Their legacy ERP environment consists of three disparate instances of AX 2012 R3 and several localized proprietary systems. The architect must address 40% custom code overlap, 5TB of historical transactional data, and a requirement for real-time global inventory visibility to support the new subscription-based revenue model. The organization struggles with siloed master data (customers and products) and inconsistent costing versions across regions.



The organization currently lacks a unified view of customer credit limits across their 15 legal entities, leading to significant financial risk. As the architect, which three components must you configure to ensure a real-time, global view of credit and collections within D365 F&O? (Select three)

- A. Implement Dual-write to sync customer credit data with Dataverse
- B. Set up "Organization hierarchies" for the Credit and Collections purpose
- C. Define a global address book for all customer entities
- D. Configure centralized payments in the Accounts Payable module
- E. Enable the "Global credit limit" parameter in Credit and Collections

Answer: B,C,E

Explanation: Defining a global address book for all customer entities ensures that the same party record is used across legal entities. Enabling the Global credit limit parameter in Credit and Collections allows the system to aggregate exposure across the enterprise. Setting up Organization hierarchies for the Credit and Collections purpose provides the structural framework for the system to understand which legal entities are included in the global credit calculation.

Question: 1599

An architect is planning the migration of General Ledger opening balances. The client requires the ability to perform a "Soft Close" validation after the first 24 hours of cut-over. The strategy involves migrating

balances by "Dimensions" and "Main Account." Which combination of entities and parameters ensures that the Trial Balance in D365 matches the legacy system exactly?

- A. General Ledger Opening Balance entity, 'Validate on Import' enabled, and 'Auto-post' set to 'No'.
- B. General Journal Account Entry entity, 'Calculate Balance' parameter set to 'True', and 'Post' flag set to 'No'.
- C. Opening Balances entity, 'Offset Account' left blank, and 'Transfer to Year-End' batch job executed.
- D. Vendor Opening Balance entity combined with Customer Opening Balance entity to ensure all sub-ledgers reconcile.

Answer: A

Explanation: The 'General Ledger Opening Balance' entity (or the 'General Journal' entity) is the standard tool for importing balances. By setting 'Auto-post' to 'No', the architect allows the finance team to import the data into a journal, run the 'Validate' function to check for dimension inconsistencies, and compare the journal totals against the legacy Trial Balance before any permanent GL impact is made. This "staging" in the journal provides the required "Soft Close" validation period.

Question: 1600

When assessing a new security architecture for their Dynamics 365 application, a company is particularly interested in record-level security. Which two key outcomes should they focus on improving through their design?

- A. Performance impact related to security evaluations.
- B. User satisfaction and ease of access to records.
- C. Minimizing the complexity of security configurations.
- D. Compliance with regulatory access requirements.
- E. Integrating third-party tools for broader security solutions.

Answer: A,D

Explanation: Addressing performance impacts ensures swift access while compliance with regulations guarantees that security measures meet legal standards.

Question: 1601

You are documenting the business process catalog for the Procure-to-Pay cycle. The client's process includes a step where any purchase order over \$50,000 requires digital approval from a category manager *before* it is sent to the vendor. The standard system sends POs to vendors immediately upon confirmation. How do you classify this requirement?

- A. A business process that is fully supported by standard "Purchase order approval" workflows, which can

be configured with a \$50,000 threshold.

- B. A data migration requirement to import historical approval records.
- C. A solution gap, because standard workflow approval happens after the PO is created internally but before it is confirmed and sent to the vendor.
- D. A configuration task involving setting the "Approved" status on the purchase order header.

Answer: A

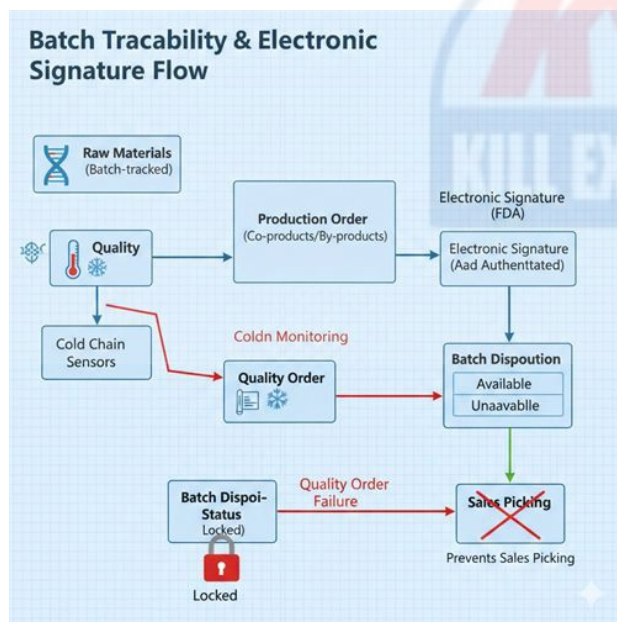
Explanation: The requirement is fully supported by the standard "Purchase order approval" workflow in Dynamics 365. Workflows can be configured with conditions, such as a purchase order total exceeding a specific amount (e.g., \$50,000). The approval step occurs in the workflow *before* the purchase order reaches the "Confirmed" status. Since a PO is only sent to the vendor upon confirmation, this configuration enforces the required business rule precisely.

Question: 1602

Case Study

BioPharma Corp produces life-saving vaccines. They are implementing Dynamics 365 Finance and Supply Chain Management. They have extremely high "Validation" requirements (GxP) and must follow "FDA 21 CFR Part 11" for electronic signatures.

The Solution Architect must design a "Batch Traceability" system to track ingredients from "Seed to Syringe." They need to implement "Batch Disposition" codes to prevent expired or failed batches from being shipped. BioPharma also requires a "Cold Chain" integration where temperature sensors in the warehouse trigger "Quality Orders" if the temperature rises above 4°C. The organization uses "Azure Key Vault" for all encryption and "LCS" for managed deployments to meet audit requirements.



To meet "GxP" requirements, the Solution Architect must ensure that all code changes are documented and approved. Which "Azure DevOps" feature should be used to enforce this before code is merged?

- A. "Dashboards" that show the number of lines of code written.
- B. "Wiki" pages where developers write their names.
- C. "Branch Policies" with mandatory "Pull Request" reviews and "Work Item" linking.
- D. "Build Pipelines" with the "Auto-merge" feature enabled.

Answer: C

Explanation: Branch Policies in Azure DevOps are the standard way to enforce "Code Governance." Requiring a Pull Request (PR) ensures that at least one other person reviews the code, and linking Work Items provides an audit trail of "Why" the change was made (e.g., a specific bug or requirement).

Question: 1603

You are designing a solution where a Power App must display a live, read-only list of available inventory from Dynamics 365 Supply Chain Management. The inventory levels change rapidly, so the data must be fetched fresh every time the app screen is opened.

- A. OData
- B. Azure Synapse Link
- C. Business events
- D. Batch Data API

Answer: A

Explanation: OData is the standard connector used by Power Platform to retrieve real-time data from Finance and Operations. Because the requirement is for a live, read-only view in a Power App for single records or small lists, OData provides the most straightforward and responsive integration.

Question: 1604

A manufacturer migrating 4.8 million journal entries faces posting layer inconsistencies across companies. Which three requirements should be gathered?

- A. Propose recurring integration for external journal data
- B. Identify optimization by standardizing ledger journal names, posting profiles, and approval workflows
- C. Gather journal entry migration volumes (4.8 million records) and define posting layer sequencing with ledger setup
- D. Document organizational challenges from entity variations and recommend centralized journal controls
- E. Map journal posting processes and perform gap analysis against general ledger features

Answer: C,E

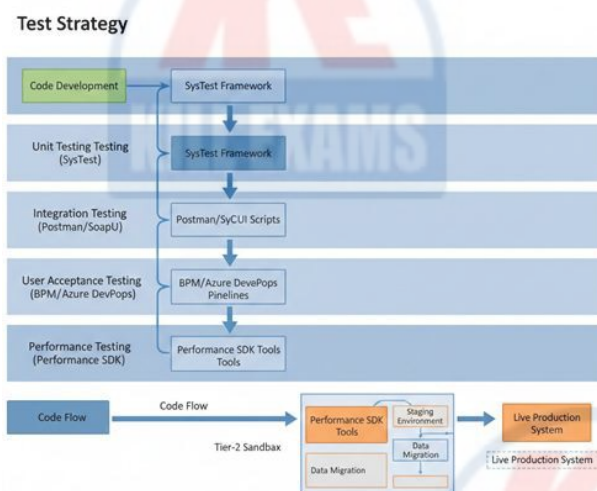
Explanation: Gathering 4.8 million journal volumes with posting layer sequencing prevents inconsistencies. Mapping posting processes enables gap analysis. Standardizing names, profiles, and workflows optimizes

posting accuracy.

Question: 1605

Case study

TechLogistics Corp is deploying Dynamics 365 Supply Chain Management. The project is currently in the 'Design' phase. They have a complex integration landscape including a third-party Warehouse Management System (WMS) and an external EDI provider. The organization needs to define their testing strategy, specifically focusing on how to handle integration performance and ensuring that future Microsoft updates do not break the high-frequency OData integrations. They are also determining whether they qualify for the FastTrack "Managed" engagement or "Partner-led" engagement based on their \$250,000 annual recurring revenue (ARR) forecast.



The project team needs to automate the validation of data entities used in the EDI integration. Which tool is best suited for automating the testing of these technical integration points without using the user interface? (Select two)

- A. Leapworks
- B. ATL (Acceptance Test Library)
- C. Postman with Newman
- D. SysTest framework
- E. RSAT (Regression Suite Automation Tool)

Answer: C,D

Explanation: Postman (integrated with Newman for CI/CD) is the industry-standard tool for testing and automating API and OData integration points. The SysTest framework can also be used to write X++ code that validates data entity behavior and logic directly within the application without requiring a browser session.

Question: 1606

A retail chain with 200 stores processes 1.2M purchase orders annually via a 20-year-old on-premises system lacking multi-currency support for its expanding international suppliers, causing 15% invoice mismatches due to FX rate discrepancies calculated manually as $(\text{CurrentRate} * \text{InvoiceAmount})$. Organizational changes from recent mergers have introduced conflicting vendor approval workflows, where procurement managers override buyer limits without audit trails, violating SOX compliance. During requirements gathering for Dynamics 365 F&O migration, what organizational challenge do you prioritize?

- A. Lack of multi-currency support leading to 15% invoice mismatches
- B. Manual FX calculations using $\text{CurrentRate} * \text{InvoiceAmount}$ formula
- C. Processing 1.2M POs in legacy on-premises system
- D. Conflicting vendor approval workflows without audit trails violating compliance

Answer: D

Explanation: The organizational challenge to prioritize is conflicting vendor approval workflows without audit trails violating SOX compliance, as this stems from merger-induced structure changes risking legal penalties and financial controls failure in the new unified system.

Question: 1607

A company is looking to develop a comprehensive business process catalog in Dynamics 365. Which aspects should be included to ensure all gaps are documented?

- A. Historical financial data analysis
- B. Existing software inventory
- C. Current operational challenges
- D. Process automation opportunities
- E. Required compliance measures

Answer: C,D,E

Explanation: Including current operational challenges, required compliance measures, and process automation opportunities allows for a thorough understanding of existing processes and the identification of gaps, making it easier to determine areas for improvement in the business process catalog.

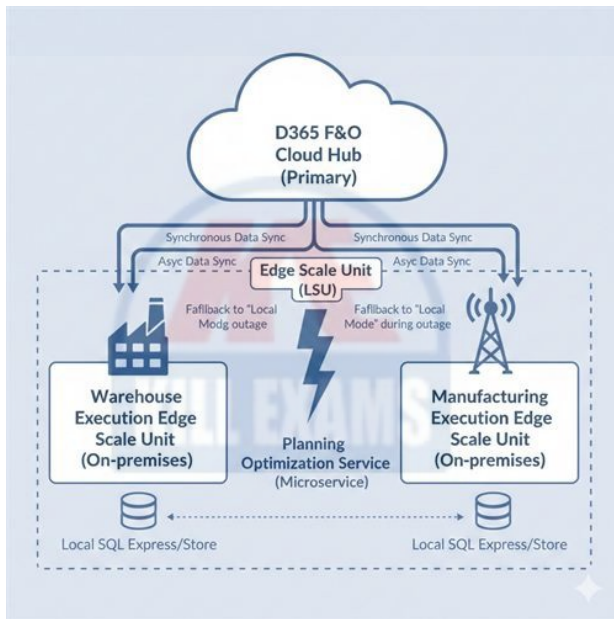
Question: 1608

Case Study

Lithium Motors produces electric vehicle components. They have a highly automated factory floor

integrated with D365 Supply Chain Management. The manufacturing process uses "Advanced Warehouse Management" (WHS) and "Manufacturing Execution System" (MES).

The company is struggling with "Data Volume" in their `WHSInventoryAzureStorage` and `InventTrans` tables, leading to slow "Master Planning" (MRP) runs. They need to implement "Planning Optimization" to reduce the MRP window from 8 hours to under 30 minutes. Additionally, they are migrating 10 years of historical "Production Orders" from an old SAP system for warranty tracking purposes. The Solution Architect must also design a strategy for "Cloud-to-Edge" manufacturing to ensure the factory floor stays operational even if the primary internet connection to the Azure region is lost.



Lithium Motors needs to implement a "Quality Control" process where a sample of every 10th finished part is tested. Which three configurations are required in the SCM module to automate this? (Select three)

- A. Use "Power Automate" to create a task in Microsoft To Do for the quality inspector.
- B. Define a "Quality test" to specify what is being measured.
- C. Configure a "Workflow" to stop the production line if a test fails.
- D. Set up a "Quality association" to trigger the quality order automatically after "Report as finished."
- E. Create a "Sampling plan" with a "Fixed quantity" or "Percentage" (e.g., 10%).

Answer: B,D,E

Explanation: These are the core functional building blocks of D365 Quality Management. The Quality Association links the process (Production/Warehouse) to the requirement. The Sampling plan determines the frequency (every 10th part), and the Test defines the criteria.

Killexams.com is a leading online platform specializing in high-quality certification exam preparation. Offering a robust suite of tools, including Exam Questions, practice tests, and advanced test engines, Killexams.com empowers candidates to excel in their certification exams. Discover the key features that make Killexams.com the go-to choice for exam success.



Practice Exam Questions Based on Current Exam Objectives

Killexams.com provides practice exam questions aligned with the latest official exam objectives and latest syllabus. Our content is reviewed and updated regularly to reflect recent changes announced by certification vendors. By studying these practice questions, candidates will cover the structure, difficulty level, and topics of the actual exam, helping them prepare more effectively and efficiently.

Comprehensive Practice Exams (PDF Format)

Killexams.com offers multiple-choice questions (MCQs) in easy-to-read PDF format, covering all major domains of the exam. Each PDF contains a structured collection of practice questions and verified answers designed to support focused study. These MCQs help candidates reinforce key concepts, identify knowledge gaps, and improve exam readiness through consistent practice.

Realistic Practice Tests (Online Test Engine & Desktop Test Engine)

To support hands-on preparation, Killexams.com provides practice tests through both an Online Test Engine and a Desktop Test Engine. These tools are designed to simulate a real exam environment, allowing candidates to practice under exam-like conditions, with latest syllabus and topics of the exam. Performance tracking, test history, and result analysis help users evaluate their progress and focus on areas that need improvement.

Risk-Free Purchase Policy

Killexams.com follows a transparent and customer-friendly purchase policy. If users are not satisfied with the study materials, they may request assistance or a refund in accordance with our published terms and conditions. This policy reflects our commitment to customer satisfaction, fairness, and confidence in our preparation resources.

Regularly Updated Content

Our practice question bank is reviewed and updated on an ongoing basis to stay aligned with the latest exam outlines and vendor updates. This ensures candidates are studying up-to-date, relevant material, and preparing with content that reflects current exam expectations, helping them stay confident and well-prepared.