



Up-to-date Practice Test with Latest Questions and Answers covering latest syllabus and topics of the exam. Makes you ready to face actual exam.



PL-500 Practice Questions  
PL-500 Practice Test  
PL-500 Practice Exam  
PL-500 Exam Questions  
PL-500 Study Guide



[killexams.com](http://killexams.com)

**Microsoft**

# PL-500

*Microsoft Power Automate RPA Developer*

ORDER FULL VERSION



<https://killexams.com/pass4sure/exam-detail/PL-500>

**Question: 44**

You need to configure the RailStatusUpdater cloud flow.

What should you do?

- A. Create a JavaScript function to update the run mode values of each action within the desktop flow.
- B. Create an environment variable. Update each desktop flow action to read the variable.
- C. Manually update each desktop flow action to change the run mode.
- D. Create a desktop flow to update the run mode values of each action within the cloud flow.

**Answer: A**

**Question: 45**

A new chrome book is connected in a school's network.

Which component can the EMS administrator use to manage the FortiClient web filter extension installed on the Google Chromebook endpoint?

- A. FortiClient EMS
- B. FortiClient site categories
- C. FortiClient customer URL list
- D. FortiClient web filter extension

**Answer: D**

**Question: 46**

A new chrome book is connected in a school's network.

Which component can the EMS administrator use to manage the FortiClient web filter extension installed on the Google Chromebook endpoint?

- A. FortiClient EMS
- B. FortiClient site categories
- C. FortiClient customer URL list
- D. FortiClient web filter extension

**Answer: D**

**Question: 47**

## DRAG DROP

You create a Microsoft Power Platform solution. You create variables to define input values for the flow. You export the solution as managed and import the solution into a user acceptance testing (UAT) environment.

The flow in the UAT environment is still using the values from the development (DEV) environment.

You need to resolve the issue.

Which four actions should you perform in sequence? To answer, move the appropriate actions from the list of actions to the answer area and arrange them in the correct order.

**Actions**

- Turn the flow off and then on again.
- Select Current value and then select Remove from this solution.
- Delete the solution from the UAT environment.
- Export and reimport the solution.
- Select Current value and then select Remove from environment.
- In the UAT environment, navigate to the solution and edit the details for each environment variable.
- In the DEV environment, navigate to the solution and edit the details for each environment variable.

**Answer Area**

### Answer:

**Actions**

- Turn the flow off and then on again.
- Select Current value and then select Remove from this solution.
- Delete the solution from the UAT environment.
- Export and reimport the solution.
- Select Current value and then select Remove from environment.
- In the UAT environment, navigate to the solution and edit the details for each environment variable.
- In the DEV environment, navigate to the solution and edit the details for each environment variable.

**Answer Area**

- Select Current value and then select Remove from environment.
- Turn the flow off and then on again.
- Delete the solution from the UAT environment.
- In the DEV environment, navigate to the solution and edit the details for each environment variable.

### Question: 48

You need to package the automations.

What should you do?

- A. Show dependencies within the solution.
- B. Remove unmanaged layers.
- C. Add required components to each item within the solution.
- D. Add existing components to the solution.

### Answer: B

### Question: 49

Topic 2, City Power and Light

## Background

City Power and Light is one of the biggest energy companies in North America. They extract, produce and transport oil. The company has more than 50 offices and 100 oil extraction facilities throughout the United States, Canada, and Mexico. They use railways, trucks, and pipelines to move oil and gas from their facilities.

The company provides the following services:

- Produce oil from oil sands safely, responsibly, and reliably
- Refine crude oil into high-quality products
- Develop and manage wind power facilities.
- Transport oil to different countries/regions.

City Power and Light uses various Microsoft software products to manage its daily activities and run its machine-critical applications.

## Requirements

### ManagePipelineMaintenanceTasks

A user named Admin1 creates a cloud flow named ManagePipelineMaintenanceTasks. Admin1 applies a data loss prevention (DLP) policy to the flow. Admin1 shares the flow with a user named PipelineManager1 as co-owner. You must determine the actions that PipelineManager can perform.

### MaintenanceScheduler

You create a cloud flow that uses a desktop flow. The desktop flow connects to third-party services to fetch information. You must not permit the desktop flow to run for more than 20 minutes.

You must configure sharing for MaintenanceScheduler to meet the following requirements:

- User1 must be able to work with you to modify the desktop flow.
- User2 must be able to access and review the run history for the flow.
- You must grant User3 permissions to run but not modify the desktop flow.

### ERPDataOperations flow

City Power and light uses an enterprise resource planning (ERP) system. The ERP system does not have an API.

Each day the company receives an email that contains an attachment. The attachment lists orders from the company's rail transportation partners. You must create an automation solution that reads the contents of the email and writes records to the ERP system. The solution must pass credentials from a cloud flow to a desktop flow.

### RailStatusUpdater

City Power and Light actively monitors all products in transit. You must create a flow named

RailStatusUpdater that manages communications with railways that transport the company's products. RailStatusUpdater includes five desktop flow actions.

You must run the desktop flows in attended mode during testing. You must run the desktop flows in unattended mode after you deploy the solution. You must minimize administrative efforts.

## Packaging

You must package the automations in a solution. All required components must be included in the solution.

## Issues

### ProductionMonitor flow

You create a cloud flow named ProductionMonitor which uses the Manually trigger a flow trigger.

You plan to trigger ProductionMonitor from a cloud flow named ProdManager.

You add a Run a Child flow action in ProdManager to trigger ProductionMonitor.

When you attempt to save ProdManager the following error message displays:

```
Request to XRM API failed with error: 'Message:Flow client error returned with status code "Bad request" and details [{"error": {"code": "ChildFlowUnsupportedForInvokerConnections", "message": "The workflow with id 8d3bcde7-7e98-eb11-b1ac-000d3a32d53f, named FlowA cannot be used as a child workflow because child workflows only support embedded connections. "}}]' Code: 0x80060467 InnerError.'
```

### CapacityPlanning flow

Developers within the company use cloud flows to access data from an on-premises capacity planning system.

You observe significant increases to the volume of traffic that the on-premises data gateway processes each day. You must minimize gateway failures.

### DataCollector flow

You have a desktop flow that interacts with a web form. The flow must write data to several fields on the form.

You are testing the flow. The flow fails when attempting to write data to any field on the web form.

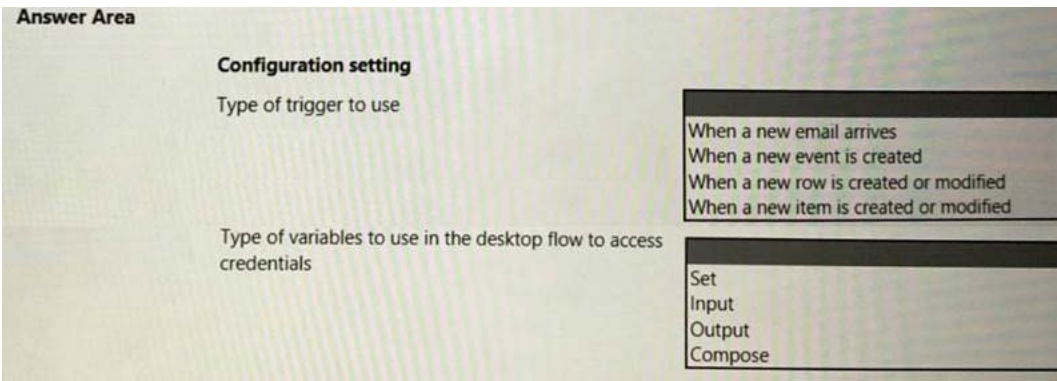
### RailStatusUpdater flow

The RailStatusUpdater flow occasionally fails due to machine connection errors. You can usually get the desktop flow to complete by resubmitting the cloud flow run. You must automate the retry process to ensure that you do not need to manually resubmit the cloud flow when machine connection errors occur.

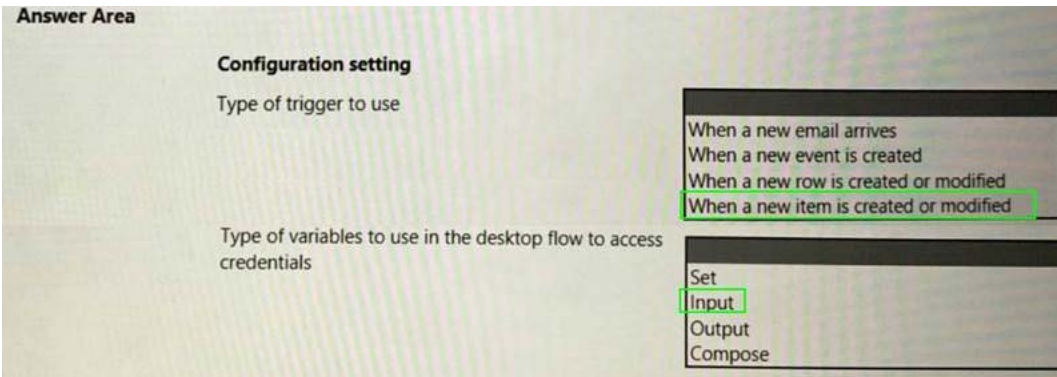
## HOTSPOT

You need to configure the solution for the ERPDataOperations flow.

Which configuration values should you use? To answer, select the appropriate options in the answer area. NOTE: Each correct selection is worth one point.



**Answer:**



**Question: 50**

You are developing a flow that interacts with a Microsoft Dataverse table named Account.

The table includes the following columns:

Name	Data type	Description
websiteurl	URL	
crabd_triggerflow	Choice	Option 1 text: Yes Option 1 value: 126690000 Option 2 text: No Option 2 value: 126690001

The flow must only trigger when a record is added to the Accounts table and the following conditions are met:

- the websiteurl field is set to https://microsoft.com
- the crabd.triggerflow field is set to Yes

You need to configure the flow trigger.

Which trigger condition expression should you use?

A)

```
@and(equals(triggerOutputs()?['body/crabd_triggerflow'], '126690000'), equals(triggerOutputs()?['body/websiteurl'], 'https://microsoft.com'))
```

B)

```
@or(equals(triggerOutputs()?['body/crabd_triggerflow'],126690000), equals(triggerOutputs()?['body/websiteurl'], 'https://microsoft.com') )
```

C)

```
@and(equals(triggerOutputs()?['body/crabd_triggerflow'],126690000), equals(triggerOutputs()?['body/websiteurl'], 'https://microsoft.com') )
```

D)

```
@or(equals(triggerOutputs()?['body/crabd_triggerflow'],'126690000'), equals(triggerOutputs()?['body/websiteurl'], 'https://microsoft.com') )
```

- A. Option A
- B. Option B
- C. Option C
- D. Option D

**Answer:** A

Killexams.com is a leading online platform specializing in high-quality certification exam preparation. Offering a robust suite of tools, including Exam Questions, practice tests, and advanced test engines, Killexams.com empowers candidates to excel in their certification exams. Discover the key features that make Killexams.com the go-to choice for exam success.



## Practice Exam Questions Based on Current Exam Objectives

Killexams.com provides practice exam questions aligned with the latest official exam objectives and latest syllabus. Our content is reviewed and updated regularly to reflect recent changes announced by certification vendors. By studying these practice questions, candidates will cover the structure, difficulty level, and topics of the actual exam, helping them prepare more effectively and efficiently.

## Comprehensive Practice Exams (PDF Format)

Killexams.com offers multiple-choice questions (MCQs) in easy-to-read PDF format, covering all major domains of the exam. Each PDF contains a structured collection of practice questions and verified answers designed to support focused study. These MCQs help candidates reinforce key concepts, identify knowledge gaps, and improve exam readiness through consistent practice.

## Realistic Practice Tests (Online Test Engine & Desktop Test Engine)

To support hands-on preparation, Killexams.com provides practice tests through both an Online Test Engine and a Desktop Test Engine. These tools are designed to simulate a real exam environment, allowing candidates to practice under exam-like conditions, with latest syllabus and topics of the exam. Performance tracking, test history, and result analysis help users evaluate their progress and focus on areas that need improvement.

## Risk-Free Purchase Policy

Killexams.com follows a transparent and customer-friendly purchase policy. If users are not satisfied with the study materials, they may request assistance or a refund in accordance with our published terms and conditions. This policy reflects our commitment to customer satisfaction, fairness, and confidence in our preparation resources.

## Regularly Updated Content

Our practice question bank is reviewed and updated on an ongoing basis to stay aligned with the latest exam outlines and vendor updates. This ensures candidates are studying up-to-date, relevant material, and preparing with content that reflects current exam expectations, helping them stay confident and well-prepared.