



Up-to-date Practice Test with Latest Questions and Answers covering latest syllabus and topics of the exam. Makes you ready to face actual exam.



TEAS-V7 Practice Questions  
TEAS-V7 Practice Test  
TEAS-V7 Practice Exam  
TEAS-V7 Exam Questions  
TEAS-V7 Study Guide



[killexams.com](http://killexams.com)

ATI

# TEAS-V7

Test of Essential Academic Skills V7

ORDER FULL VERSION

<https://killexams.com/pass4sure/exam-detail/TEAS-V7>



### Question: 535

4sU-seq in serum-starved cells reveals Pol II pause-release at immediate-early genes via NELF displacement, enhancer RNA production. Controlled by?

- A. Mediator loops
- B. P-TEFb release
- C. CDK9/TAF
- D. Super-enhancer hubs

**Answer: B**

Explanation: P-TEFb (CDK9/Cyclin T) phosphorylates DSIF/NELF/Pol II Ser2 CTD, transitioning promoter-proximal pausing to productive elongation upon mitogenic signals.

### Question: 536

A family pedigree shows a trait that generally follows Mendel's law of dominance, but some individuals with the dominant genotype do not express the phenotype, indicating variable expressivity. If the probability of expression is 60% for heterozygotes and 90% for homozygotes, what is the expected proportion of affected offspring from a heterozygous affected parent mated with a homozygous recessive? (Select one)

- A. 50%
- B. 75%
- C. 45%
- D. 30%

**Answer: D**

Explanation: The proportion is the probability of inheriting the dominant allele (50%) multiplied by the expression rate for heterozygotes (60%), equaling 30%.

### Question: 537

A scientist is studying the effect of temperature on the rate of a chemical reaction. According to kinetic molecular theory, how does increasing the temperature specifically increase the reaction rate? (Select All that Apply)

- A. By increasing the kinetic energy of the molecules, ensuring more collisions exceed the activation energy
- B. By decreasing the activation energy required for the reaction
- C. By increasing the frequency of collisions between reactant molecules
- D. By increasing the potential energy stored within the chemical bonds of the reactants

**Answer:** A,C

Explanation: Increasing temperature increases the average kinetic energy of the molecules. This leads to two things: first, molecules move faster and collide more frequently (increasing the collision frequency); second, a higher percentage of those collisions possess enough energy to overcome the activation energy barrier. Temperature does not lower the activation energy itself (that is the role of a catalyst), nor does it increase the internal bond potential energy of the reactants.

### Question: 538

A genetic screening reveals a translocation event where a segment of Chromosome 9 has swapped places with a segment of Chromosome 22 (the Philadelphia Chromosome). This translocation fuses two genes, creating a new, oncogenic protein. This phenomenon best illustrates which concept of genetic organization?

- A. Sex-linked inheritance
- B. Polygenic inheritance
- C. Chromosomal aberration independent of Mendelian inheritance
- D. Independent assortment of alleles

**Answer:** C

Explanation: A translocation is a structural alteration of the chromosome, not a standard gene allele variation. It involves the physical breakage and reattachment of chromosome segments. This is a chromosomal aberration (mutation). It is not Independent Assortment (which refers to whole chromosomes sorting randomly), nor Polygenic (multiple genes affecting one trait), nor Sex-linked (X/Y chromosome related). It is a somatic mutation leading to cancer (CML).

### Question: 539

A scientist analyzing neuronal cells from a Huntington's disease model detects nuclear inclusions of mutant huntingtin protein with expanded polyglutamine tracts, alongside decreased histone acetylation measured by ChIP-qPCR (50% reduction at promoter regions). This pathology primarily affects which aspect of cell organization?

- A. Euchromatin structure
- B. Nucleolar dominance
- C. Heterochromatin condensation
- D. Cytoplasmic streaming

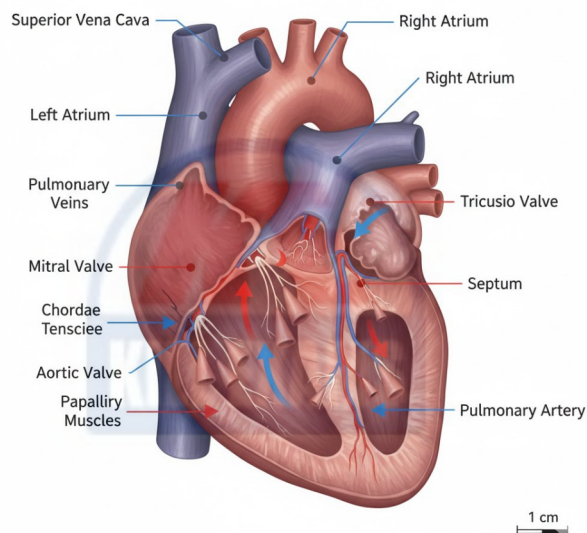
**Answer:** A

Explanation: Euchromatin represents transcriptionally active, loosely packed DNA; mutant huntingtin

sequesters transcription factors and HATs (histone acetyltransferases), compacting euchromatin into repressive states, which impairs gene expression and neuronal survival by altering nuclear architecture.

### Question: 540

Examine the illustrated structure of a human heart in a sagittal plane view.



Based on the diagram, which structure prevents backflow of blood from the right ventricle to the right atrium during systole, and what is its physiological significance in cardiovascular function?

- A. Tricuspid valve
- B. Mitral valve
- C. Pulmonary valve
- D. Aortic valve

**Answer:** A

Explanation: The tricuspid valve, located between the right atrium and right ventricle, closes during ventricular contraction to prevent regurgitation of deoxygenated blood back into the atrium, ensuring unidirectional flow towards the pulmonary artery for oxygenation. This valve consists of three cusps attached to chordae tendineae and papillary muscles, maintaining efficient circulation and preventing conditions like tricuspid regurgitation.

### Question: 541

In a specific breed of cattle, coat color is controlled by codominance. Red coat color (R) and white coat color (W) are codominant alleles. Heterozygous individuals (RW) exhibit a roan coat color, where both red

and white hairs are present. If a farmer crosses a roan bull with a white cow, what percentage of the offspring are expected to have a red coat? (Select One)

- A. 100%
- B. 50%
- C. 0%
- D. 25%

**Answer: C**

Explanation: A roan bull has the genotype RW, and a white cow has the genotype WW. The Punnett square for this cross (RW x WW) yields two genotypes: RW (roan) and WW (white), each with a 50% probability. There are no RR (red) offspring produced in this cross. Thus, the percentage of offspring with a red coat is 0%.

### Question: 542

In a laboratory setting, a student is tasked with measuring the density of an irregular solid object using basic tools. The object has a mass of 45.6 grams, and when submerged in a graduated cylinder, it displaces water from 20.0 mL to 35.5 mL. However, the student notices air bubbles clinging to the object during submersion, which could affect the volume measurement. How should the student apply scientific reasoning to correct this and calculate the accurate density? (Select one)

- A. Repeat the submersion after tapping the cylinder to release bubbles, then use the new displacement of 20.0 mL to 34.2 mL
- B. Ignore the bubbles and use the initial displacement for density calculation
- C. Use Archimedes' principle directly without measuring displacement
- D. Calculate density as mass divided by displaced volume without correction, yielding 2.95 g/mL

**Answer: A**

Explanation: Repeating the submersion after tapping the cylinder to release bubbles, then using the new displacement of 20.0 mL to 34.2 mL ensures an accurate volume of 14.2 mL, leading to a density of  $45.6 \text{ g} / 14.2 \text{ mL} = 3.21 \text{ g/mL}$ . Calculating density as mass divided by displaced volume without correction, yielding 2.95 g/mL or ignoring the bubbles and using the initial displacement for density calculation overlooks the overestimation of volume due to bubbles, while using Archimedes' principle directly without measuring displacement isn't feasible without the displacement data.

### Question: 543

Which of the following hormones is primarily responsible for regulating blood glucose levels?

- A. Glucagon

- B. Insulin
- C. Cortisol
- D. Thyroxine

**Answer:** B

Explanation: Insulin is a hormone produced by the pancreas that lowers blood glucose levels by facilitating the uptake of glucose into cells. Glucagon, on the other hand, raises blood glucose levels by stimulating the liver to release stored glucose.

### Question: 544

In an industrial application, a chemist uses cellulose, a carbohydrate macromolecule. Compare its structure to chitin, and how the beta linkages affect function in plants versus exoskeletons. (Select all that apply)

- A. Chitin beta-1,4 glucosamine, flexible for insects
- B. Cellulose alpha-1,4 glucose, digestible for energy
- C. Chitin beta-1,4 N-acetylglucosamine, tough for protection
- D. Cellulose beta-1,4 glucose, rigid for cell walls

**Answer:** C,D

Explanation: Cellulose is beta-1,4 linked glucose, forming linear chains with hydrogen bonds for rigid plant cell walls. Chitin is beta-1,4 linked N-acetylglucosamine, similar but with nitrogen for added strength in fungal walls and insect exoskeletons. The option "Chitin beta-1,4 glucosamine, flexible for insects" is incorrect because it's N-acetylglucosamine, and it's tough, not flexible. The option "Cellulose alpha-1,4 glucose, digestible for energy" is incorrect because it's beta, making it indigestible for most animals.

### Question: 545

A patient presents with a lesion located superior to the umbilicus and inferior to the xiphoid process, in the midsagittal plane. Which anatomical plane divides this lesion into equal left and right halves? (Select one)

- A. Frontal plane
- B. Coronal plane
- C. Transverse plane
- D. Sagittal plane

**Answer:** D

Explanation: The midsagittal plane, also known as the median plane, divides the body into equal left and right halves, passing through the midline structures such as the umbilicus and xiphoid process. The coronal plane and frontal plane are synonymous and divide the body into anterior and posterior parts, while the transverse plane divides it into superior and inferior sections, none of which would specifically create equal left and right halves in this scenario.



*Up-to-date Questions and Answers from authentic resources to improve knowledge and pass the exam at very first attempt. ---- Guaranteed.*



TEAS-V7 MCQs  
TEAS-V7 Exam Questions  
TEAS-V7 Practice Test  
TEAS-V7 TestPrep  
TEAS-V7 Study Guide



[killexams.com](http://killexams.com)

**ATI**

# TEAS-V7 (MATH)

*Test of Essential Academic Skills (V7)  
Latest Q&As of 2026*

ORDER FULL VERSION

<https://killexams.com/pass4sure/exam-detail/TEAS-V7>



**Question: 241**

A nurse is solving for the weight  $w$  in pounds using the equation  $w = 2.2 * k$ , where  $k$  is kilograms. If  $w = 154$  pounds, solve for  $k$ .

- A. 70
- B. 65
- C. 80
- D. 75

**Answer:** A

Explanation:  $k = w / 2.2 = 154 / 2.2 = 70$ . The value 65 would be for  $w = 143$  pounds, 75 for 165 pounds, 80 for 176 pounds.

**Question: 242**

If  $2x + 3 = 19$ , what is the value of  $x$ ?

- A. 8
- B. 9
- C. 7
- D. 6

**Answer:** C

Explanation: Subtract 3 from both sides:  $2x = 16$ . Then divide by 2:  $x = 8$ .

**Question: 243**

Solve the system of equations  $x + y = 10$ ,  $2x - y = 5$  for  $x$  and  $y$ , in dual parameter lab test.

- A.  $x = 7, y = 3$
- B.  $x = 4, y = 6$
- C.  $x = 6, y = 4$
- D.  $x = 5, y = 5$

**Answer:** D

Explanation: The solution  $x = 5, y = 5$  satisfies  $x + y = 10$  and  $2x - y = 10 - 5 = 5$ . The value  $x = 4, y = 6$  gives  $2*4 - 6 = 2 \neq 5$ ,  $x = 6, y = 4$  gives  $2*6 - 4 = 8 \neq 5$ ,  $x = 7, y = 3$  gives  $2*7 - 3 = 11 \neq 5$ .

### Question: 244

What is the solution to the equation  $2(x - 4) = 3x + 6$ ?

- A. -2
- B. 2
- C. 8
- D. 4

**Answer:** A

Explanation: Expanding gives  $2x - 8 = 3x + 6$ . Rearranging leads to  $x = -2$ .

### Question: 245

A nurse is calculating the time  $t$  in hours for an IV infusion using the equation  $t = V / r$ , where  $V$  is the volume of 1000 mL and  $r$  is the rate of 125 mL/hr. Solve for  $t$ .

- A. 7
- B. 7.5
- C. 6.5
- D. 8

**Answer:** D

Explanation: Rearrange the equation to  $t = V / r = 1000 / 125 = 8$ . The value 6.5 would result if  $V$  was 812.5 mL, 7 if 875 mL, 7.5 if 937.5 mL.

### Question: 246

Which of the following inequalities is true?

- A.  $0.72 > 8/11$
- B.  $15/20 = 70\%$
- C.  $8/11 = 0.7272\dots$  0.72 is not greater than 0.7272. False.
- D.  $15/20 = 3/4 = 0.75$ .  $70\% = 0.70$ . 0.75 is not equal to 0.70. False.

**Answer:** G

Explanation: Evaluate each option.

- E.  $4/9 = 0.444\dots$  0.444... is less than 0.45. True.
- F.  $5/8 = 0.625$ .  $60\% = 0.60$ . 0.625 is not less than 0.60. False.
- G.  $4/9 < 0.45$
- H.  $5/8 < 60\%$

**Question: 247**

Body temperature is 99.45°F. Round to nearest tenth for clinical note, where >99.5 indicates low fever.

- A. 99.4
- B. 100.0
- C. 99.6
- D. 99.5

**Answer:** A

Explanation: Hundredths 4 <5, do not round up, 99.4. 99.5 if  $\geq 5$ , 99.6 over, 100.0 way.

**Question: 248**

In a fluid balance calculation, the equation  $i = o + 500$ , where  $i$  is intake in mL,  $o$  is output. If  $i = 2500$  mL, solve for  $o$ .

- A. 1500
- B. 2000
- C. 3000
- D. 2500

**Answer:** B

Explanation:  $o = i - 500 = 2500 - 500 = 2000$ . The value 1500 would be for  $i = 2000$  mL, 2500 for  $i = 3000$  mL, 3000 for  $i = 3500$  mL.

**Question: 249**

In a lab, the pH level of a solution is measured as 7.456. To apply rounding for reporting, round to the nearest tenth, considering the context where values above 7.5 indicate alkalinity requiring adjustment.

- A. 7.5
- B. 7.4
- C. 8.0
- D. 7.6

**Answer:** A

Explanation: The digit in the hundredths place is 5, so round up from 7.45 to 7.5. 7.4 would be if the hundredths were less than 5, 7.6 over-rounds, and 8.0 ignores the decimal precision.

**Question: 250**

Solve the inequality  $3x + 4 \geq 19 - 2x$  for  $x$ , for range of acceptable test results.

- A.  $x \geq 4$
- B.  $x \geq 3$
- C.  $x \geq 5$
- D.  $x \geq 6$

**Answer: B**

Explanation: Add  $2x$  to both sides,  $5x + 4 \geq 19$ , subtract 4,  $5x \geq 15$ , divide by 5,  $x \geq 3$ . Other values if mis added or divided.

**Question: 251**

A patient receives intravenous fluid at 148.9 mL per hour for 9.75 hours. Estimate total fluid by rounding rate to nearest 50 mL and time to nearest hour.

- A. 1350
- B. 1650
- C. 1200
- D. 1500

**Answer: D**

Explanation: Rounding 148.9 to 150 and 9.75 to 10, then 150 times 10 equals 1500. The value 1200 uses lower rate, 1350 partial time, 1650 higher rate.



*Up-to-date Questions and Answers from authentic resources to improve knowledge and pass the exam at very first attempt. ---- Guaranteed.*



TEAS-V7 MCQs  
TEAS-V7 Exam Questions  
TEAS-V7 Practice Test  
TEAS-V7 TestPrep  
TEAS-V7 Study Guide



[killexams.com](http://killexams.com)

**ATI**

# TEAS-V7 (English)

*Test of Essential Academic Skills (V7)  
Latest Q&As of 2026*

ORDER FULL VERSION

<https://killexams.com/pass4sure/exam-detail/TEAS-V7>



### Question: 206

During the revising phase of composing a research paper on quantum computing, what complex action integrates feedback to refine thesis clarity without altering core arguments?

- A. Eliminating redundant evidence
- B. Strengthening counterarguments
- C. Refining thesis for precision
- D. Updating citations systematically

**Answer:** C

Explanation: Refining the thesis for precision in revising hones the central claim based on feedback, ensuring it precisely captures the paper's focus on quantum advancements while maintaining argumentative integrity. Eliminating redundancy is editing; strengthening counterarguments is content expansion; updating citations is proofreading. This step elevates overall effectiveness.

### Question: 207

What does the prefix "pre-" in the word "preview" signify?

- A. During
- B. Before
- C. Over
- D. After

**Answer:** B

Explanation: The prefix "pre-" means "before." In "preview," it indicates viewing something before it is officially released or available.

### Question: 208

Root "chron" (time), prefix "syn-" (together): "synchronous" means: Events happening \_\_\_\_\_.

- A. At the same time
- B. Infrequently
- C. Backward
- D. In sequence

**Answer: A**

Explanation: "Syn-" together/with, "chron" time, so synchronous is simultaneous occurrence. "In sequence" ordered; "backward" anachronic; "infrequently" rare. Parts define temporal relation exactly.

### Question: 209

In planning a persuasive speech on renewable energy adoption, which technique generates diverse supporting details by associating related concepts visually?

- A. Listing pros and cons linearly
- B. Questioning assumptions sequentially
- C. Journaling personal anecdotes
- D. Clustering key terms radially

**Answer: D**

Explanation: Clustering key terms radially, akin to mind mapping, organizes ideas around a core topic during planning, fostering associations like economic benefits linking to jobs and sustainability. Journaling is reflective; listing is categorical; questioning is analytical. This visual method enriches content depth.

### Question: 210

In a citation, commas misused: "The study published in 2025 found that interestingly the treatment was effective." Correct? (Select one)

- A. The study, published in 2025 found that, interestingly, the treatment was effective.
- B. The study published in 2025 found that interestingly, the treatment was effective.
- C. The study, published in 2025, found that, interestingly, the treatment was effective.
- D. The study published in 2025, found that interestingly the treatment was effective.

**Answer: C**

Explanation: Appositive "published in 2025" needs commas around it; adverb "interestingly" requires commas as interrupter.

### Question: 211

Which sentence best illustrates the use of figurative language?

- A. The researchers gathered data from various sources.
- B. The results were inconclusive and required further analysis.
- C. The report was finished ahead of schedule.
- D. The sun dipped below the horizon like a golden coin.

**Answer:** D

Explanation: The second option uses a simile ("like a golden coin") to create a vivid image, illustrating the use of figurative language effectively.

### Question: 212

"Yup, you too... hey wait, what are you up to tonight, anyways?" Which of the following explanations identifies the speaker's situation in the sentence above?

- A. A friend is asking another friend about their plans for the evening.
- B. An investigator is talking about research on acceptable work schedules.
- C. A speaker is practicing a speech for a debate about working overtime.
- D. A boss is asking an employee about their schedule to see if they can work late.

**Answer:** A

Explanation: The casual slang like "yup," "up to," and "anyways," combined with the informal inquiry, indicates a conversation between friends about evening plans. A boss-employee interaction would be more professional, a speech practice would be structured, and an investigator's discussion would use formal research language, none matching the relaxed tone here.

### Question: 213

Which sentence demonstrates correct use of punctuation in a compound sentence?

- A. The project was due yesterday, however, I submitted it today.
- B. I wanted to go for a walk; but it started to rain.
- C. He studied hard for the exam yet he did not pass.
- D. She loves to read, and she enjoys writing.

**Answer:** D

Explanation: The second option correctly uses a comma before "and" to separate two independent clauses, while the other sentences either misuse punctuation or fail to connect clauses properly.

### Question: 214

Which of the following sentences would indicate that the setting is in medieval Europe?

- A. The crowd swayed to the jazz rhythms, and flappers danced the night away in the speakeasy.
- B. The citizens gathered to watch the rocket launch at the newly built space center.
- C. In the emperor's court, the scholars debated using wisdom from the ancient texts of Confucius.
- D. The knights jousting valiantly in the tournament, vying for the king's favor.

**Answer:** D

Explanation: "The knights jousting valiantly in the tournament, vying for the king's favor" references medieval elements like knights and kings. "In the emperor's court, the scholars debated using wisdom from the ancient texts of Confucius" suggests ancient China. "The citizens gathered to watch the rocket launch at the newly built space center" is modern. "The crowd swayed to the jazz rhythms, and flappers danced the night away in the speakeasy" is 1920s.

### Question: 215

Punctuation for appositive in abstract: "Nurse Jones RN administered the dose." (Select one)

- A. Nurse Jones RN, administered the dose.
- B. Nurse Jones, RN, administered the dose.
- C. Nurse Jones, RN administered the dose.
- D. Nurse, Jones RN, administered the dose.

**Answer:** B

Explanation: Nonrestrictive appositive "RN" (additional title info) set off by commas both sides for credential clarity.

### Question: 216

Living in one of the warmest countries on Earth poses many challenges, as its inhabitants need not only to find inventive ways to stay cool, but they also require innovative strategies that allow them to grow their own food. Since 1985, Dmitry Ivanov has been researching hydroponic farming systems, a way to grow crops directly in nutrient-rich water. Among its many advantages, Dmitry remarks on the fact that hydroponics offers a decrease in water usage in agriculture: to grow 1 kilogram of tomatoes using intensive farming methods requires 400 liters of water, whereas hydroponic methods need only 70 liters. Nevertheless, climate change and land degradation will render all of Ivanov's efforts useless. Which of the following sentences from the passage does not follow the overall tone of the passage?

- A. Among its many advantages, Dmitry remarks on the fact that hydroponics offers a decrease in water usage in agriculture: to grow 1 kilogram of tomatoes using intensive farming methods requires 400 liters of water, whereas hydroponic methods need only 70 liters.

**B.** Since 1985, Dmitry Ivanov has been researching hydroponic farming systems, a way to grow crops directly in nutrient-rich water.

**C.** Nevertheless, climate change and land degradation will render all of Ivanov's efforts useless.

**D.** Living in one of the warmest countries on Earth poses many challenges, as its inhabitants need not only to find inventive ways to stay cool, but they also require innovative strategies that allow them to grow their own food.

**Answer:** C

Explanation: The passage maintains an informative and optimistic tone by highlighting challenges and innovative solutions like hydroponics, but "Nevertheless, climate change and land degradation will render all of Ivanov's efforts useless" introduces a defeatist and negative perspective that disrupts the constructive discussion. "Among its many advantages, Dmitry remarks on the fact that hydroponics offers a decrease in water usage in agriculture: to grow 1 kilogram of tomatoes using intensive farming methods requires 400 liters of water, whereas hydroponic methods need only 70 liters" supports the positive aspects. "Living in one of the warmest countries on Earth poses many challenges, as its inhabitants need not only to find inventive ways to stay cool, but they also require innovative strategies that allow them to grow their own food" sets up the problem-solving context. "Since 1985, Dmitry Ivanov has been researching hydroponic farming systems, a way to grow crops directly in nutrient-rich water" provides factual background aligned with the tone.

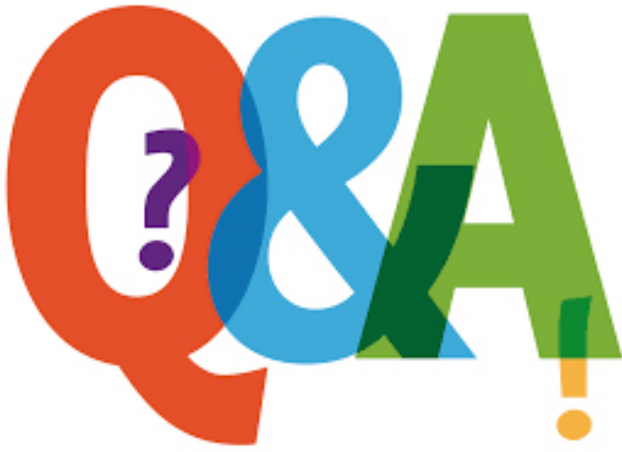
### Question: 217

A lab report misspells: "The specimen was analyzed under the microscope." But "analized" is wrong; correct per rules? (Select one)

- A.** The specimen was analyzed under the microscope.
- B.** The specimen was analyzed under the microscope.
- C.** The specimen was annalyzed under the microscope.
- D.** The specimen was analyzed under the microscope.

**Answer:** B

Explanation: "Analyzed" uses "y" before "z" in American English, differing from British "analysed," and avoids double "i" or "n" errors.



Up-to-date Questions and Answers from authentic resources to improve knowledge and pass the exam at very first attempt. ---- Guaranteed.



TEAS-V7 MCQs  
TEAS-V7 Exam Questions  
TEAS-V7 Practice Test  
TEAS-V7 TestPrep  
TEAS-V7 Study Guide



[killexams.com](https://killexams.com)

**ATI**

# TEAS-V7 (Reading)

Test of Essential Academic Skills (V7)  
Latest Q&As of 2026

ORDER FULL VERSION

<https://killexams.com/pass4sure/exam-detail/TEAS-V7>



### Question: 460

In a CPR resuscitation scenario: check responsiveness, call for help, open airway, check breathing, start compressions, give rescue breaths, continue cycles. The training video shows steps out of order. What is the fourth step?

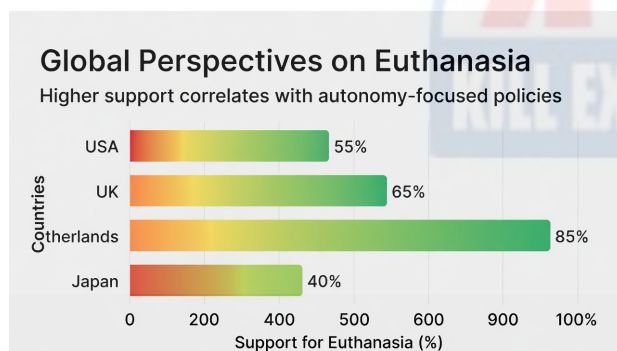
- A. Continue cycles
- B. Call for help
- C. Check breathing
- D. Start compressions

**Answer:** C

Explanation: Check responsiveness, call help, open airway, check breathing, compressions, breaths, cycles, making breathing check fourth before chest interventions.

### Question: 461

An editorial in a medical ethics journal presents the author's perspective on euthanasia, advocating for patient autonomy while acknowledging cultural oppositions, supported by a survey graph showing varying public opinions across countries. The graph highlights the author's viewpoint.



What is the author's point of view on euthanasia, as evaluated from the editorial and the graph?

- A. Public opinion is irrelevant, and euthanasia should be opposed on ethical grounds.
- B. Euthanasia should be banned globally due to low support in some countries.
- C. Euthanasia should be promoted where support is high, respecting cultural differences.
- D. Patient autonomy justifies euthanasia legalization, as seen in high-support regions.

**Answer: D**

Explanation: The editorial emphasizes patient autonomy as key, using the graph to show high support in autonomy-oriented countries like Netherlands at 85%, aligning with the author's advocacy; low support in Japan at 40% is noted but not used to oppose. Euthanasia should be banned globally due to low support in some countries ignores the advocacy. Euthanasia should be promoted where support is high, respecting cultural differences partially matches but misses the strong autonomy focus. Public opinion is irrelevant, and euthanasia should be opposed on ethical grounds contradicts the author's perspective.

### Question: 462

A report on quantum computing. Paragraph one describes qubit advancements to 100 qubits. Paragraph two discusses applications in drug discovery speeding simulations 1000x. Paragraph three concludes potential revolution in fields but security risks. What conclusion?

- A. Quantum computing poses security risks but offers advancements
- B. Qubits are decreasing in number
- C. Quantum computing has no applications
- D. Simulations are slower with quantum

**Answer: A**

Explanation: The report highlights qubit growth, fast simulations, revolutionary potential, and risks. Quantum computing has no applications contradicts. Quantum computing poses security risks but offers advancements is balanced. Qubits are decreasing in number is false. Simulations are slower with quantum is opposite.

### Question: 463

A patient is instructed to take their medication twice a day, 12 hours apart. If the patient takes their first dose at 8:00 AM, what time should they take their second dose?

- A. 8:00 AM
- B. 10:00 PM
- C. 8:00 PM
- D. 6:00 PM

**Answer: C**

Explanation: The second dose should be taken 12 hours after the first dose. Therefore, if the first dose is taken at 8:00 AM, the second dose will be at 8:00 PM.

### Question: 464

Passage: "Unlike the Sympathetic Nervous System which prepares the body for 'fight or flight', the Parasympathetic Nervous System promotes 'rest and digest' activities."

Scenario: A patient enters the ER with a heart rate of 120 bpm, dilated pupils, and inhibited digestion. Based on the text, which system is currently dominant in the patient? (Select One)

- A. Sympathetic, because the symptoms align with 'fight or flight' responses.
- B. Parasympathetic, because digestion is inhibited.
- C. Neither, these are symptoms of a stroke.
- D. Parasympathetic, because the heart rate is elevated.

**Answer:** A

Explanation: The text defines Sympathetic as "fight or flight." Physiologically, "fight or flight" involves increased heart rate and dilated pupils (to see better), and inhibition of non-essential functions like digestion. The patient's symptoms match the description of the Sympathetic system's function.

### Question: 465

Analyze the public health surveillance report: "Track incidence rates per 100,000 population, formula =  $(\text{new\_cases} / \text{population}) * 100000$ . Categorize by regions R1-R4 with thresholds: low <10, medium 10-50, high >50. Report weekly via dashboard with charts: bar for rates, line for trends. If outbreak detected (rate increase >20%), activate response team RT-7. Archive data in SQL table HEALTH\_STATS." What formula is used for incidence rates? (Select one)

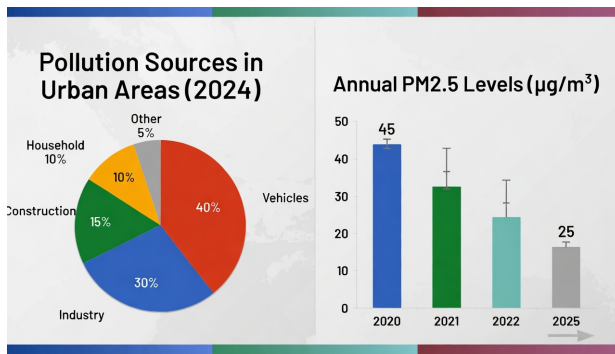
- A. Rate increase >20% for outbreak
- B. Weekly report via dashboard with bar and line charts
- C.  $(\text{new\_cases} / \text{population}) * 100000$
- D. Regions R1-R4 with thresholds low <10, medium 10-50, high >50

**Answer:** C

Explanation: Incidence rates are calculated as  $(\text{new\_cases} / \text{population}) * 100000$  per 100,000 population. Categorizing by regions R1-R4 with thresholds: low <10, medium 10-50, high >50 is for classification. Rate increase >20% detects outbreak. Reporting weekly via dashboard with charts: bar for rates, line for trends is the output method.

### Question: 466

Scenario: An environmental scientist is evaluating data from a multi-source report on urban air quality, combining textual descriptions of pollution sources with a pie chart breaking down contributors and a bar graph showing yearly trends.



Using the integrated data from the visuals and the report's note that vehicle emissions have decreased due to electric adoption, what is the primary reason for the overall decline in PM2.5 levels from 2020 to 2025?

- A. Industrial regulations were relaxed
- B. Vehicle emissions reduced significantly
- C. Household contributions remained stable
- D. Construction activities surged

**Answer:** B

Explanation: The pie chart indicates vehicles as the largest contributor at 40%, and the bar graph shows a consistent decline in PM2.5 levels, aligning with the report's mention of electric vehicle adoption reducing emissions, unlike construction at 15% which surged per text, household at 10% stable, or industry at 30% with relaxed regulations potentially increasing but not overriding the vehicle impact.

### Question: 467

A medical research team presented a box plot comparing cholesterol levels (mg/dL) in two groups: control (median 180, IQR 160-200, outliers at 140 and 220) and treatment (median 160, IQR 150-170, no outliers). The plot shows the treatment group's narrower spread and lower median. Interpreting this visual, what conclusion can be drawn about the treatment's impact on hypercholesterolemia patients?

- A. The treatment shifts levels higher, based on IQR differences
- B. The treatment increases variability, worsening cholesterol control
- C. The treatment has no effect, as outliers in control are similar
- D. The treatment reduces median cholesterol and variability, suggesting better management

**Answer:** D

Explanation: The box plot's lower median and tighter IQR for the treatment group indicate reduced levels and consistency, supporting efficacy in controlling high cholesterol.

Killexams.com is a leading online platform specializing in high-quality certification exam preparation. Offering a robust suite of tools, including Exam Questions, practice tests, and advanced test engines, Killexams.com empowers candidates to excel in their certification exams. Discover the key features that make Killexams.com the go-to choice for exam success.



## Practice Exam Questions Based on Current Exam Objectives

Killexams.com provides practice exam questions aligned with the latest official exam objectives and latest syllabus. Our content is reviewed and updated regularly to reflect recent changes announced by certification vendors. By studying these practice questions, candidates will cover the structure, difficulty level, and topics of the actual exam, helping them prepare more effectively and efficiently.

## Comprehensive Practice Exams (PDF Format)

Killexams.com offers multiple-choice questions (MCQs) in easy-to-read PDF format, covering all major domains of the exam. Each PDF contains a structured collection of practice questions and verified answers designed to support focused study. These MCQs help candidates reinforce key concepts, identify knowledge gaps, and improve exam readiness through consistent practice.

## Realistic Practice Tests (Online Test Engine & Desktop Test Engine)

To support hands-on preparation, Killexams.com provides practice tests through both an Online Test Engine and a Desktop Test Engine. These tools are designed to simulate a real exam environment, allowing candidates to practice under exam-like conditions, with latest syllabus and topics of the exam. Performance tracking, test history, and result analysis help users evaluate their progress and focus on areas that need improvement.

## Risk-Free Purchase Policy

Killexams.com follows a transparent and customer-friendly purchase policy. If users are not satisfied with the study materials, they may request assistance or a refund in accordance with our published terms and conditions. This policy reflects our commitment to customer satisfaction, fairness, and confidence in our preparation resources.

## Regularly Updated Content

Our practice question bank is reviewed and updated on an ongoing basis to stay aligned with the latest exam outlines and vendor updates. This ensures candidates are studying up-to-date, relevant material, and preparing with content that reflects current exam expectations, helping them stay confident and well-prepared.